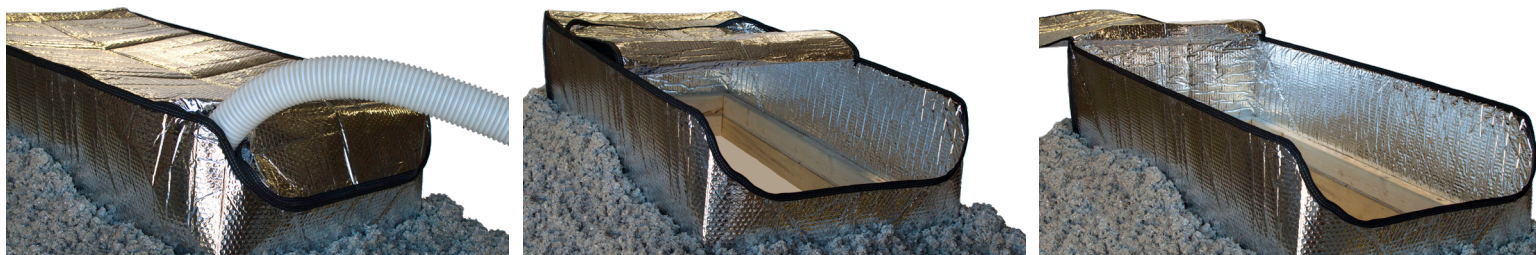


# T·A·P® HATCHMASTER

The PROVEN Attic Stairway Cover that Protects the Home!

T·A·P®  
PEST CONTROL  
INSULATION



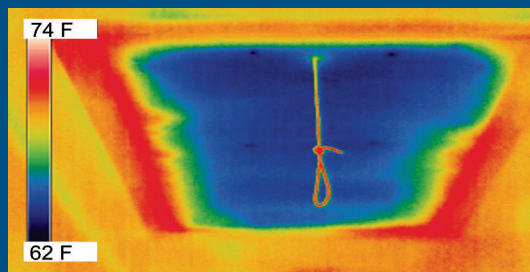
## How the T·A·P® Hatchmaster's Reflective Insulation Works

Heat is transferred in three ways: conduction, convection and radiation. Our reflective insulation attic stairway insulator functions by forming air spaces with layers of air bubbles and reflective foil. These spaces restrict air movement which reduces heat flow by convection. In addition to reducing heat transfer by convection, the high reflectivity and low emissivity of each reflective layer also reflects away up to 96% of radiant heat. Radiant heat transfer is all but eliminated.

Added to this is the fact that when our insulator is installed properly in the attic stairway opening, a 12" dead air space is created. In order to realize the highest R-Values, you must have dead air space on the reflective side of the insulator. Dead air space adds 1.2 R-Value per inch. The TAP® Hatchmaster is the perfect compliment to our TAP® Pest Control Insulation program.

### Specifications:

- Nominal Thickness at 5/16"
- Fire Rating Class 1 / Class A (ASTM E84-09)
- Full Room Burn Pass (NFPA 286)
- Emissivity 0.04 (ASTM C1371-04A)
- Temp Range -50°F to 180°F (ASTM C411)
- Water Vapor Permeability 0.02 Perms (ASTM E96)
- Thermal Resistance R-15.2 (Heat Flow Down)
- Reflectivity 0.96 (ASTM E903)
- Installs easily with only a staple gun
- Resistance to Fungi - Does not Promote Growth (ASTM C1149)
- Pliability - No Cracking (ASTM C1224-03)
- Bleeding / De-lamination: None (ASTM C1224-03)
- Corrosiveness Pass (ASTM D3310-00)
- Available in SEVEN sizes:  
**20" x 20" 22" x 30" 24" x 54" 30" x 30"**  
#H2020 #H2230 #H2454 #H3030  
**26" x 54" 30" x 54" 30" x 60"**  
#H2654 #H3054 #H3060



Without the TAP® Hatchmaster Installed.



With the TAP® Hatchmaster Installed to  
Save Energy All Year Long.

The ASTM C236-1224 tests that determine a product's r-value yield the following results for Double Bubble Reflective Insulation: Down=R-15.2, Up=R-6.8, Horizontal=R-8.5.