



DISMISS® TURF HERBICIDE

See results the next day. And the next season.

You've been waiting for these kinds of results against sedges. And waiting. And waiting. But with Dismiss® turf herbicide from FMC Professional Solutions, the wait is over. Dismiss is the industry's fastest control of yellow nutsedge, green kyllinga and purple nutsedge* — with results beginning to appear in just 24–48 hours. What's more, Dismiss impacts the reproductive structures of sedges underground, giving you a noticeable reduction in weed populations the following season.

*For purple nutsedge, two applications of Dismiss turf herbicide are recommended for optimal control.

Satisfy Your Need for Speed

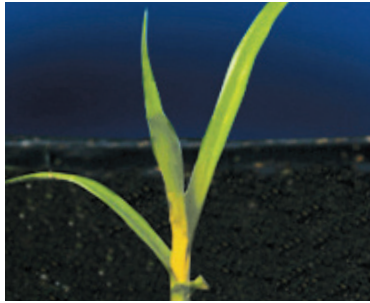
Formulated for truly accelerated sedge control, Dismiss turf herbicide practically starts eliminating weeds like yellow nutsedge, green kyllinga and purple nutsedge right before your eyes. You'll notice results faster than ever before, often within just a day or two. University research trials have demonstrated greater than 90% control within a week, before other products even begin to work.

"In my area, yellow nutsedge is becoming an epidemic — it's everywhere. For my full-service lawn care customers, I offer free nutsedge control as part of my summer weed control program. I switched to using Dismiss because it works pretty quick and my customers can see results the next day. Plus, I like the liquid formulation because it fits my application equipment better."

Bob Windish President, Fairway Green • HILLSBOROUGH, NEW JERSEY

See for Yourself

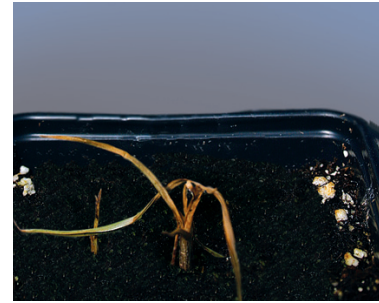
Dismiss Turf Herbicide Efficacy on Yellow Nutsedge



1 day after treatment



3 days after treatment



5 days after treatment

Below is a speed comparison between SedgeHammer® and Dismiss. As you can clearly see, Dismiss has virtually eliminated unsightly yellow nutsedge, while the competition is just beginning to show visible results.



Dismiss – 3 days after treatment



Dismiss – 7 days after treatment



Dismiss – 14 days after treatment



SedgeHammer – 3 days after treatment



SedgeHammer – 7 days after treatment

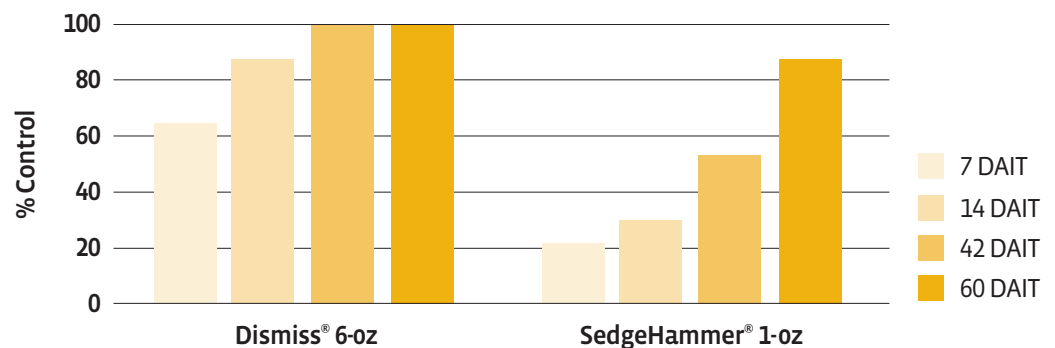


SedgeHammer – 14 days after treatment

By the Numbers

Dismiss not only works fast — it lasts. Just look at how it stacks up against SedgeHammer on postemergence yellow nutsedge.

Dismiss® vs. SedgeHammer®
SPEED COMPARISON DATA
ON YELLOW NUTSEDGE



Roch Gaussoin, Ph.D – University of Nebraska • KY bluegrass – Initial applications made June 22, 2009

A Deeper Level of Control

On Nutsedge

Dismiss turf herbicide penetrates the soil and stops sedge tubers from germinating. This helps to prevent future outbreaks, reducing the need for re-treats down the line and minimizing chemical and labor costs for you.

In this study, soil from areas treated with a postemergence application of Dismiss turf herbicide were compared with untreated areas. As you can see, areas treated with Dismiss showed a clear reduction of sedge tubers, and no tubers in those areas showed any signs of germination.*

Dismiss® Tuber Control

Treatment	Number of Tubers	% of Reduction	Signs of Germination
Control	447	0%	Yes
Dismiss® Postemergence Treatment	306	32%	No

*Tubers were harvested from the soil at Sparks Research Station in Sparks, GA. All tubers were shipped to FMC greenhouse facilities in Princeton, NJ for germination observation. Dismiss data represents average of findings when applied at 6 oz per acre and 8 oz per acre.

On Green Kyllinga

When faced with a heavy stand of green kyllinga (a member of the sedge family), Superintendent Todd Gribling of Tantallon Country Club treated a thousand square feet with a trial application of Dismiss. You'll note that Dismiss not only achieved visible burndown of the green kyllinga, it prevented weeds from reestablishing the next season.



Trial area following treatment with Dismiss.



The same area the following spring.

Beyond Sedge Control

On top of fast-acting, long-lasting control of yellow nutsedge, green kyllinga and purple nutsedge, Dismiss is also labeled for postemergence use on 45 broadleaf weeds — so you'll notice an apparent reduction in broadleaf populations where you've treated for sedges. And when tank mixed with other postemergence herbicides, Dismiss is proven to speed up and enhance control of many broadleaf weeds and grasses, like goosegrass.

Tough on Sedges, Not on Turf

For fast, effective results against sedges, apply Dismiss between April and September. Dismiss turf herbicide is approved for use on the following cool-season grasses:

Tall Fescue (*Festuca arundinacea*)

Perennial Ryegrass (*Lolium perenne*)

Fine Fescue (*Festuca rubra*)

Creeping Bentgrass (*Agrostis palustris*)

Rough Bluegrass (*Poa trivialis*)

Kentucky Bluegrass (*Poa pratensis*)

Dismiss is also labeled for the following warm-season grasses: Bermudagrass, kikuyugrass, seashore paspalum, zoysiagrass, St. Augustinegrass, Bahiagrass, Buffalograss, carpetgrass and centipedegrass. See label for details.

Sized to Fit Your Needs

Dismiss turf herbicide is available in two convenient sizes to meet the demands of your turf. The 6-oz package is the perfect size for a 1-acre application at rates for cool-season turf, and features a unique measuring attachment and side-view stripe to help you accurately measure product for smaller volume sprayers. For areas with larger acreage, Dismiss is also available in a ½-gallon (64-oz) package.



To learn more about Dismiss turf herbicide and other products from FMC Professional Solutions, visit www.fmcprosolutions.com or contact your FMC Sales Representative or your local FMC Distributor.

FMC

FMC Professional Solutions

1-800-321-1FMC • fmcprosolutions.com


Dismiss
TURF HERBICIDE

Always read and follow label directions. FMC and Dismiss are trademarks of FMC Corporation. SedgeHammer is a trademark of Gowan Company LLC.
©2010 FMC Corporation. All rights reserved.

T1195-2

MRA 1195-2 08-10