

The WAREHOUSE Protocol

When insects in warehouses infest stored goods, the resulting damage can be extremely costly. Keep insects under control with a protocol specifically designed for warehouses and storage areas.

TREATING THE WHOLE SPACE

Featured Products:



Lambda 9.7 CS
Insecticide



Gentrol® Aerosol
Insecticide



Gentrol® IGR Concentrate
Insect Growth Regulator



QuikStrike® Fly
Abatement Strip
Insecticide



Pyronyl™ Fogging
PF Concentrate
Insecticide

A Two-Step Solution:

After disposing of infested materials, treat racks, loading docks and foundation expansion joints with a tank mix of a residual and an IGR. Recommended products include **Zenprox® EC** or **Lambda 9.7 CS** insecticides combined with **Gentrol® IGR Concentrate**.



A Quick Kill:

If breeding sources and sites have already been addressed, simply treat the facility with **Pyronyl™ Fogging PF Insecticide** as a fogging or space spray application. This adulticide has been approved for use in food handling areas.



Target Insects:



House Flies

Sanitation is essential when it comes to controlling house flies. After cleaning the warehouse, ensure that all food and waste receptacles are properly sealed.



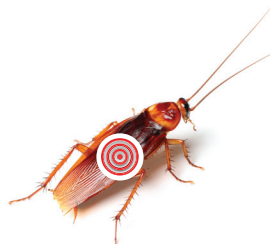
Stored Product Pests

Before treating for stored product pests, destroy all infested foods and sanitize surrounding areas.



Phorid Flies

While most fly species will fly away when threatened, phorid flies can be identified by their tendency to run or “scuttle” away.



Cockroaches

To prevent cockroaches from re-entering the facility, seal up cracks in windows and doors.

Where to Look:

- While house flies like to rest on floors, walls and ceilings, they breed in decaying matter such as food, garbage and drains.
- Phorid flies breed in garbage, drains and in the soil under concrete slabs. In the case of the latter, you may need to break through the concrete and remove the dirt.
- Stored product pests infest whole grains and processed foods. They can be found underneath product containers as well as inside of them.
- Cockroaches enter buildings through loading dock doors and drains. They often hide in expansion joints around building foundations.

A “Greener” Alternative:

Finding an eco-friendly pest control protocol is especially important among warehouses that hold sensitive materials and foodstuffs.



Spray **Essentria® All Purpose Insect Concentrate** on floors, walls and niches to treat crawling insects.



Use **EcoPCO® D-X Dust Insecticide** around door openings, in hollow surfaces in walls and around equipment.



Spray **EcoPCO® AR-X Multi-Purpose Insecticide** or **EcoPCO® ACU Insecticide** aerosols into cracks, crevices and void spaces where crawling insects could be hiding in non-food handling areas.



To treat cockroaches, spiders, crickets and stored product pests, apply **EcoPCO® WP-X Water Soluble Pouches** to walls, cracks, crevices and pipe openings.



To kill wasps, hornets and yellow jackets on contact, spray **EcoEXEMPT® Jet Wasp & Hornet Spray** on nests where food is not present.