

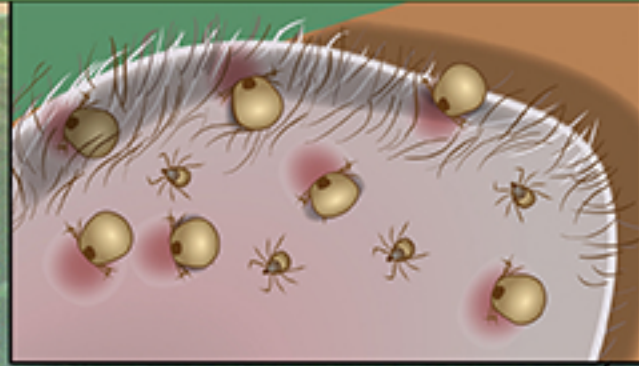
# Not just mice, chipmunks too!



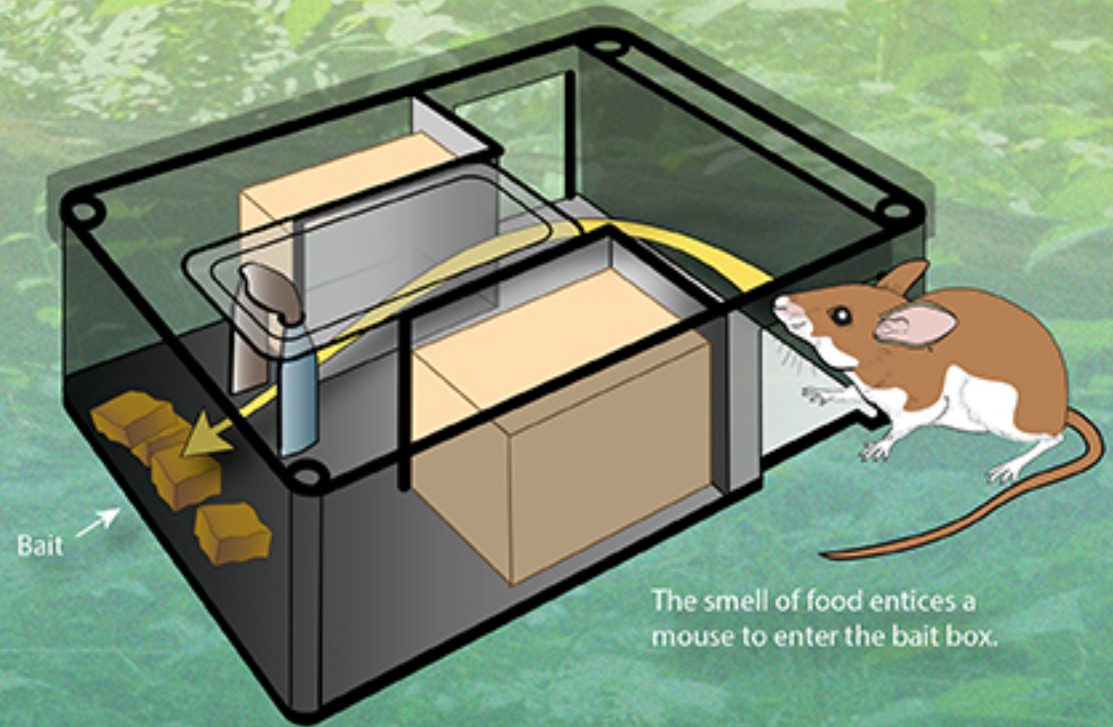
## Anatomy of a bait box

Wendolyn Hill

- 1 Bait boxes are placed around the perimeter of a home to attract the white-footed mouse that carries the bacterium responsible for Lyme disease and other illnesses. Ticks that feed on the mice become infected with the bacterium and transmit it to humans.



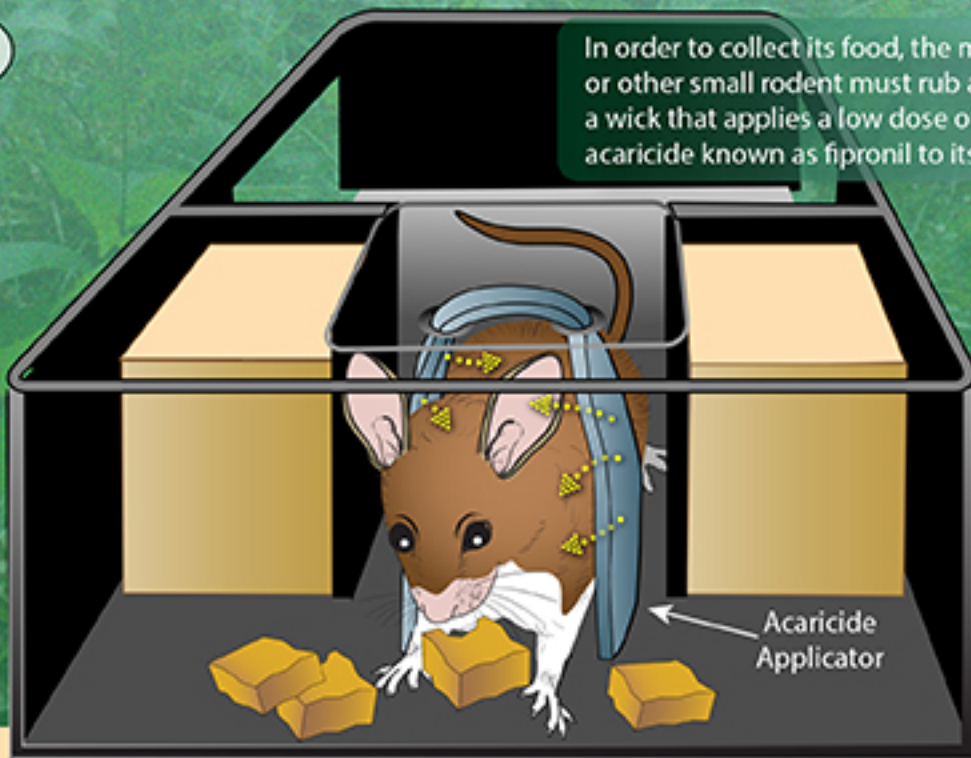
2



The smell of food entices a mouse to enter the bait box.

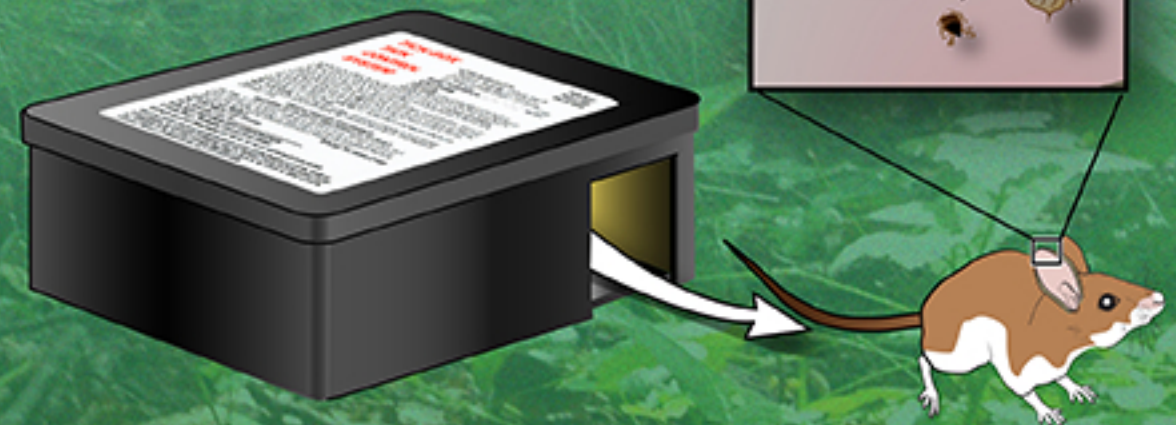
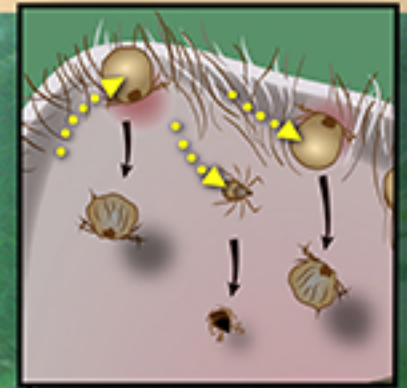
3

In order to collect its food, the mouse or other small rodent must rub against a wick that applies a low dose of an acaricide known as fipronil to its fur.



4

The mouse exits the bait box unharmed as the fipronil quickly works to kill any ticks that the mouse is carrying. The agent continues to kill ticks for many weeks after the initial application.



Yale SCHOOL OF PUBLIC HEALTH

Our product treats both chipmunks and mice (host animals) which are the reservoirs of the bacteria that cause Lyme Disease. The Tick Box Tick Control System achieves 97% control and interrupts the transmission cycle of Lyme disease, no other product can make that claim.