

STORGARD® THINLINE III

QUICK CHANGE™

IMM+4 BROAD SPECTRUM™ MOTH MONITORING SYSTEM



Indianmeal Moth, *Plodia interpunctella*, Mediterranean Flour Moth, *Ephestia kuehniella*, Raisin Moth, *Cadra figulilella*, Tobacco Moth, *Ephestia elutella*, and Almond Moth, *Cadra cautella*

Assembly Instructions

STEP 1.

Remove traps from reclosable foil package.

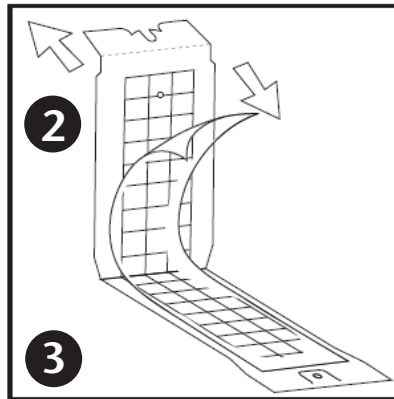


STEP 2.

Fold perforated line at the top of trap for ease of trap assembly.

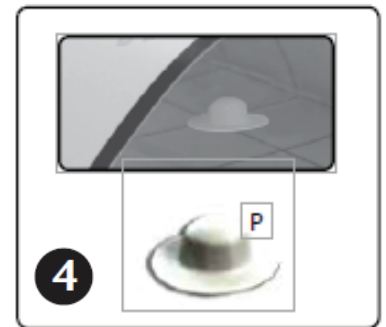
STEP 3.

Remove adhesive covering to expose both adhesive surfaces of the trap.



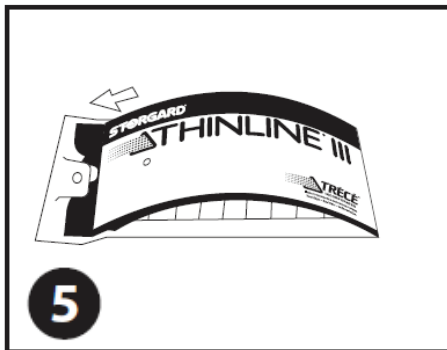
STEP 4.

PREBAITED™: Pheromone (P) lure is already installed in the trap.



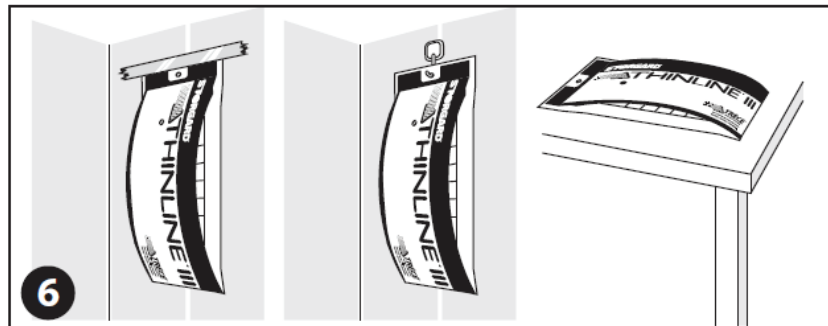
STEP 5.

Assemble trap by folding in half and tucking under flap.



STEP 6.

Hang trap on wall or place on flat surface.



Visit our website: www.trece.com or call 1-866-785-1313



INSECT PHEROMONE & KAIROMONE SYSTEMS

Your Edge – And Ours – Is Knowledge.