

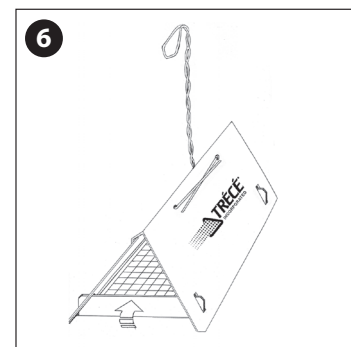
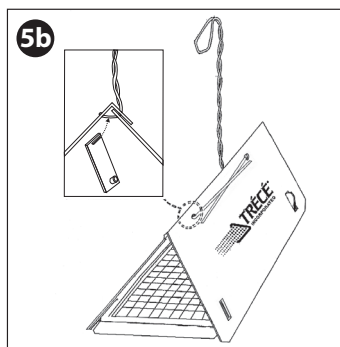
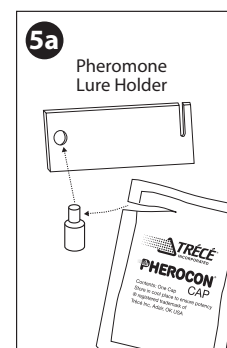
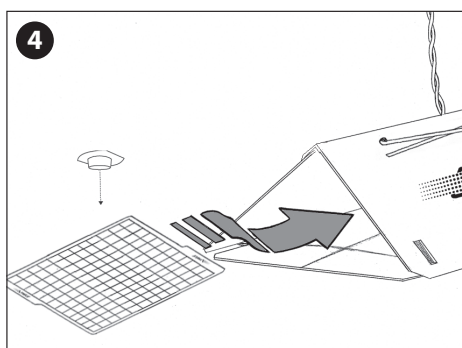
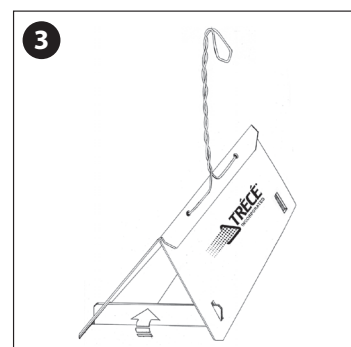
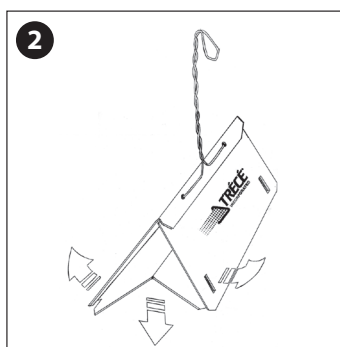
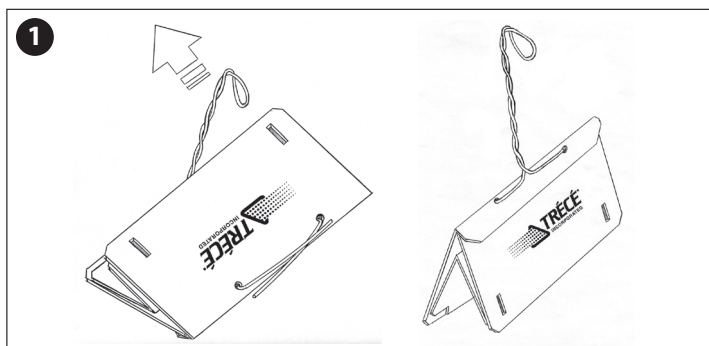
Assembly Instructions for use with PHEROCON AA Lure

TRAP ASSEMBLY INSTRUCTIONS

1. Straighten wire that is wrapped around trap.
2. Pull center of trap down to form a triangle.
3. Fold one end of the trap inward until tabs lock into slots (leaving the other end open until liner and lure are inserted).
4. Open glued liner.
Place PHEROCON AA lure (small side on glue) in the center of the glued liner.
Holding Trece logo, place liner in trap as shown.
5. a. Insert pheromone septa into the small hole in lure holder.
b. At open end of trap, place lure holder in trap by pushing onto exposed inside top wire, as shown.
6. Fold other end of trap inward until tabs lock into slots as shown in Step 3.
7. Trap is now complete and ready to hang.

IMPORTANT: USE ONLY ONE LURE PER TRAP.

NOTE: Liners and lures may be sold separately.



Visit our website: www.trece.com or call 1-866-785-1313

© 2013 TRECE, Adair, OK USA

TRECE, PHEROCON, STORGARD and CIDETRAK are registered trademarks of Trece, Inc., Adair, OK USA