

Chimney Covers Multi-Pack Single Flue

STAINLESS STEEL MULTI-PACK

STOCK NUMBER	OUTSIDE TILE SIZE (IN INCHES)	FITS OUTSIDE TILE DIMENSION (IN INCHES)	CARTON PACK	APPROX. LBS. SHIPPING WEIGHT
MPSS99	9 x 9	7½ x 7½ to 9½ x 9½	4	22.0
MPSS913	9 x 13	7½ x 11½ to 9½ x 13½	4	27.0
MPSS918	9 x 18	7½ x 16½ to 9½ x 18½	4	34.0
MPSS1212	12 x 12	10½ x 10½ to 12½ x 12½	4	33.0
MPSS1313	13 x 13	11½ x 11½ to 13½ x 13½	4	34.0
MPSS1318	13 x 18	11½ x 16½ to 13½ x 18½	4	45.0



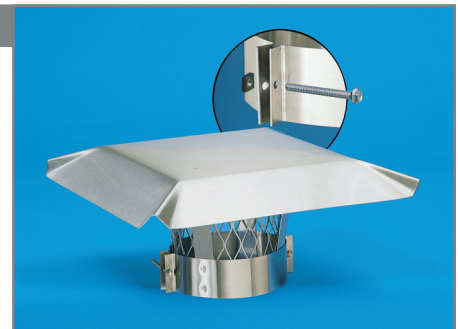
FEATURES

- HY-C Lifetime Limited Warranty
- Space Saving Design and Package
- Easy Assembly, Lids Attach in Seconds with Wing Nuts (included) with Weld Bolts to Prevent Stripping
- Removable 24 Gauge Single Piece Hood with Roll Formed Edges
- 16 Gauge Stainless Steel Base for Extra Strength
- 100% Stainless Steel
- Ships Nested in a Four Pack Carton
- 18 Gauge ¾" Expanded Stainless Steel Mesh
- Side Bolt-On Mounting with Pointed Stainless Steel Slotted Hex-Head Bolts with Weld Nuts to Prevent Stripping

Chimney Covers Liner Cap Single Flue

STAINLESS STEEL

STOCK NUMBER	OUTSIDE TILE SIZE (IN INCHES)	FITS OUTSIDE TILE DIMENSION (IN INCHES)	APPROX. LBS. SHIPPING WEIGHT
LC-4	4	3½ to 4½	4.0
LC-5	5	4½ to 5½	4.0
LC-6	6	5½ to 6½	4.0
LC-7	7	6½ to 7½	4.0
LC-8	8	7½ to 8½	4.0
LC-9	9	8½ to 9½	5.0
LC-10	10	9½ to 10½	5.5
LC-11	11	10½ to 11½	6.0
LC-12	12	11½ to 12½	6.0
LC-13	13	12½ to 13½	6.5
LC-14	14	13½ to 14½	6.5



HY-C's liner cap is specifically designed to fit rigid and flexible stainless steel liners. It is also adaptable for use with clay flue liners or any round applications.

FEATURES

- 100% Stainless Steel
- HY-C Lifetime Limited Warranty
- Completely Assembled With Welded Construction
- Liner Cap Easily Mounted With 2" Draw Band and Slotted Hex-Head Bolts and Nuts
- Removable 18 Gauge ¾" Expanded Stainless Steel Mesh
- Removable 18 Gauge ¾" Expanded Stainless Steel Mesh Available for California
- Stainless Steel Double-Clamp Draw Band
- 24 Gauge Single Piece Hood
- 24 Gauge Base
- 18 Gauge Braces

Other sizes available on special order basis. HY-C's Liner Cap straps around outside of liner, which makes it easily removed for chimney cleaning. Does not slip inside liner.