

PEST MANAGEMENT  
PROFESSIONALS



**Genus<sup>®</sup>**

The world's leading range of insect light traps

CREATING  
BETTER  
ENVIRONMENTS





# Genus<sup>®</sup>

## ADVANCED TECHNOLOGY LEADING INNOVATION

**Genus<sup>®</sup> by Brandenburg is the world's leading range of insect light traps proven to catch more flies, faster.**

Each member of the Genus<sup>®</sup> family is packed with innovative technology, robust build quality and easy-to-service features that mean you can offer your customer a solution perfectly tailored to their needs.

Patented Translucent Technology<sup>™</sup> increases fly catch rates while minimizing power consumption, leading to reduced running costs and lower CO<sub>2</sub> emissions. Electronic ballast future-proofs each insect light trap against ongoing regulation changes.

Genus<sup>®</sup> front of house solutions blend seamlessly with internal decor, while the back of house range minimizes servicing time, thus increasing profit opportunities.

**Create better environments for your customers with Genus<sup>®</sup> from Brandenburg.**



\* Compared to units of a similar power



## MAXIMIZING THE EFFECTIVENESS OF INSECT LIGHT TRAPS

### Site Survey

In order for the ILTs to be most effective, careful consideration must be given to their placement. Carry out an initial survey to gather information on the site:

1. Start outside the building
  - a. Note the most likely sources of insects – i.e. breeding sites such as dumpsters, drainage, farms etc.
2. Walk from outside to the inside of the building
  - a. Establish the likely entry points for flying insects
  - b. Determine the natural path the insects might take as they move through the building
  - c. Consider how windows, doors, lighting and air movement might guide insects along.
3. Grade the areas of the building according to level of risk – low, medium and high.
4. Define front and back of house areas that need flying insect control equipment.
5. Plan the specific locations for insect light traps.

### General Placement Guidelines

It is important to place ILTs in the best position to maximize effectiveness.

- It is recommended that ILTs are wall mounted 6.5ft (2m) from the ground, the typical height of a fly's flight path, and where they can be easily accessed to be serviced.
- ILTs should not be positioned where they may be damaged e.g. in passageways, in the way of maintenance staff or fork lift trucks.
- Position ILTs so that they intercept flies before they can enter critical areas.
- Position ILTs so that insects are drawn away from the area that is being protected.
- Do not place ILTs over food preparation, packaging or processing areas.

### ILT Maintenance

It is important to maintain the ILTs to prolong best performance.

- Replace consumables regularly:
  - Control boards should be changed every four weeks.
  - Bulbs should be changed every 12 months prior to peak insect season in March/April.
- Keep ILTs clean and free from debris by servicing and cleaning them on a regular basis.



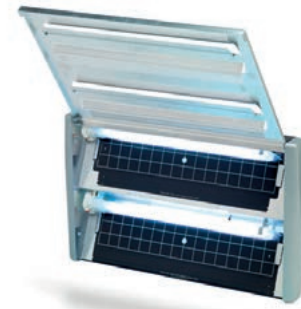
## BACK OF HOUSE INSECT LIGHT TRAPS

### Genus® SPECTRA



**KEY FEATURE:**  
High performance fly catch.

- 2 x 36 Watt UVA output for fast catch
- Finished with an attractive screen providing complete catch discretion
- Horizontal, vertical or corner wall mounting or can stand-alone.
- Lift and stay hinged cover for both hands free servicing



| Product                                       | Order Code |
|---|------------|
| Spectra 2 x 36w bulb standard                 | 794933     |
| Spectra 2 x 36w bulb sleeved                  | 796707     |
| <b>Dimensions:</b> 12.5" w x 20.4" h x 2.7" d |            |
| <b>Weight:</b> 6.63 lbs.                      |            |
| <b>UV Light Output:</b> 72 watts              |            |
| <b>Bulbs</b>                                  |            |
| Electrosect 36w bulb standard pack of 10      | 794913     |
| Electrosect 36w bulb sleeved pack of 10       | 794914     |
| <b>Glueboard</b>                              |            |
| Brandenburg Universal Glueboard               | 794916     |

**Slimline design for areas where space is at a premium, combined with high fly catch performance and easy servicing.**

High UVA output delivering quick fly catch, with low running costs. Genus® Spectra features uniquely positioned bulbs to maximize UVA output and ensure flies head unobstructed straight for the discreet glueboards.

### Genus® ORBIT



**KEY FEATURE:**  
Incorporates Translucent Technology™ for faster fly catch.

- Built in pheromone tray to hold attractants for increased fly catch
- Ability to use pheromones to attract fly species not attracted by UV light
- Fully hinged door and quick release cover for easy servicing of glueboard



**Featuring Translucent Technology™ for premium performance in flying insect control with low running costs and ease of servicing.**

Translucent Technology™ is patented and exclusive to Brandenburg. It enhances UVA, delivering 2.4 times the output of conventional ILTs, resulting in 87% more flies caught\*, whilst also minimizing energy consumption.

\* Compared to non-translucent ILTs of a similar power

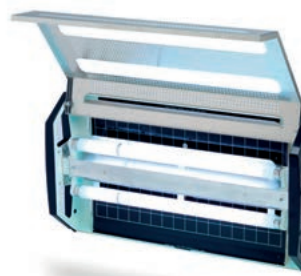
| Product                                     | Order Code |
|---|------------|
| Orbit 3 x 15w bulb sleeved                  | 794932     |
| <b>Dimensions:</b> 13.5" w x 20.8" h x 5" d |            |
| <b>Weight:</b> 10 lbs.                      |            |
| <b>UV Light Output:</b> 45 watts            |            |
| <b>Bulbs</b>                                |            |
| Electrosect 15w bulb standard pack of 25    | 794909     |
| Electrosect 15w bulb standard 12 x 2 pack   | 794910     |
| Electrosect 15w bulb sleeved pack of 25     | 794911     |
| Electrosect 15w bulb sleeved 12 x 2 pack    | 794912     |
| <b>Glueboard</b>                            |            |
| Brandenburg Universal Glueboard             | 794916     |

### Genus® FLI



**KEY FEATURE:**  
High performance fly catch with low running cost.

- Has the power and reliability needed for heavy fly activity
- Lift and stay hinge cover for both hands free servicing
- Horizontal, vertical or corner wall mounting or can stand-alone.



| Product                                     | Order Code |
|---|------------|
| Fli 2 x 15w bulb standard                   | 794935     |
| Fli 2 x 15w bulb sleeved                    | 796709     |
| <b>Dimensions:</b> 11.7" w x 21" h x 3.4" d |            |
| <b>Weight:</b> 5.93 lbs.                    |            |
| <b>UV Light Output:</b> 30 watts            |            |
| <b>Bulbs</b>                                |            |
| Electrosect 15w bulb standard pack of 25    | 794909     |
| Electrosect 15w bulb standard 12 x 2 pack   | 794910     |
| Electrosect 15w bulb sleeved pack of 25     | 794911     |
| Electrosect 15w bulb sleeved 12 x 2 pack    | 794912     |
| <b>Glueboard</b>                            |            |
| Brandenburg Universal Glueboard             | 794916     |

**Versatile ILT can be wall mounted, corner mounted or free standing. Low running cost, easy to service unit.**

Genus® Fli combines efficient running costs with high performance in a variety of installations. Two 15 Watt bulbs are augmented by integral reflectors to enhance fly catch efficacy.

### Genus® ORBIT JET



**KEY FEATURE:**  
IP65 rated for safe wash-down.

- Dust proof and protects from water penetration in all directions
- Unit can remain switched on while washing
- No fear of short circuits or down time



**The Genus® Orbit Jet boasts all the same features as the Genus® Orbit and is also IP65 rated for wet and wash-down areas.**

The IP65 rated Genus® Orbit Jet is suitable for use in areas where walls and equipment are required to be washed down such as slaughterhouses, meat and fish processing plants.

| Product                                     | Order Code |
|---|------------|
| Orbit Jet Proof 3 x 15w bulb sleeved        | 799643     |
| <b>Dimensions:</b> 13.5" w x 20.8" h x 5" d |            |
| <b>Weight:</b> 10.59 lbs.                   |            |
| <b>UV Light Output:</b> 45 watts            |            |
| <b>Bulbs</b>                                |            |
| Electrosect 15w bulb sleeved 12 x 2 pack    | 794912     |
| Electrosect 15w bulb sleeved pack of 25     | 794911     |
| <b>Glueboard</b>                            |            |
| Brandenburg Universal Glueboard             | 794916     |

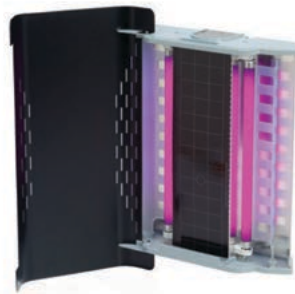
## FRONT OF HOUSE INSECT LIGHT TRAPS

### Genus® ECLIPSE



**KEY FEATURE:**  
Attractive design for use in public areas.

- 30 Watt UVA for powerful insect attraction and discretion
- Stylish design for 'front of house' locations
- Can be personalized to enhance your brand
- Available with black cover and black light blue (BLB) UVA bulbs or white cover and standard (BL) UVA bulbs

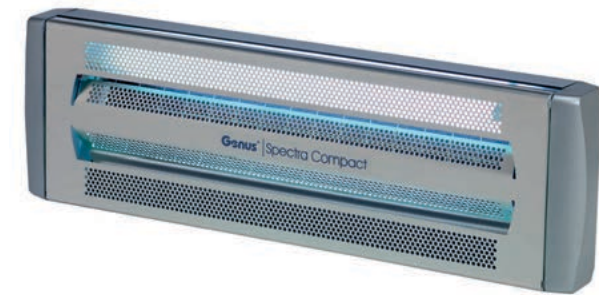


| Product  | Order Code |
|--|------------|
| Eclipse 2 x 15w BLB bulb standard black cover  | 794817     |
| Eclipse 2 x 15w BL bulb standard white cover   | 798797     |
| <b>Dimensions:</b> 16.1" w x 11.9" h x 3.7" d  |            |
| <b>Weight:</b> 4.35 lbs                        |            |
| <b>UV Light Output:</b> 30 watts               |            |
| <b>Color:</b> Black or White                   |            |
| <b>Bulbs</b>                                   |            |
| Eclipse 15w BLB bulb standard black pack       | 801577     |
| Eclipse 15w BL bulb standard white 12 x 2 pack | 801576     |
| <b>Glueboard</b>                               |            |
| Brandenburg Universal Glueboard                | 794916     |

Discreet performance combines with stylish design, unlimited customizing options and ease of servicing.

Genus® Eclipse disguises effective, silent fly catch performance with a fully customizable front cover in a contemporary design. Servicing is quick and bulbs are available in black light blue option to further harmonize with front of house decor.

### Genus® SPECTRA COMPACT



**KEY FEATURE:**  
High performance for areas of limited space.

- Faster catch rate with 36 Watt UVA bulb
- Horizontal, vertical or corner wall mounting or can stand-alone.
- Lift and stay hinged cover for both hands free servicing



| Product                                      | Order Code |
|--|------------|
| Spectra Compact 1 x 36w bulb standard        | 794814     |
| Spectra Compact 1 x 36w bulb sleeved         | 794813     |
| <b>Dimensions:</b> 6.4" w x 20.4" h x 2.7" d |            |
| <b>Weight:</b> 4.45 lbs.                     |            |
| <b>UV Light Output:</b> 36 watts             |            |
| <b>Bulbs</b>                                 |            |
| Electrosect 36w bulb standard pack of 10     | 794913     |
| Electrosect 36w bulb sleeved pack of 10      | 794914     |
| <b>Glueboard</b>                             |            |
| Brandenburg Universal Glueboard              | 794916     |

Powerful performance and ease of servicing in a slimline design for limited space without compromising fly control.

Genus® Spectra Compact can be installed in the tightest of spaces, without compromising performance. Powerful 36W bulb and cover design ensure flies are attracted to the glueboard for fast and effective flying insect control.

## REPLACEMENT PARTS FOR BRANDENBURG ILTS

### UV Bulbs by Product

| Product Name                              | Description | Packaging | Univar # |
|---|-------------|-----------|----------|
| <b>15W x 12" bulbs for Genus® Eclipse</b> |             |           |          |
| Bulbs for Genus® Eclipse, black           | 15W x 12"   | 25/Cs     | 801577   |
| Bulbs for Genus® Eclipse, white           | 15W x 12"   | 24/Cs     | 801576   |

### 15W x 18" bulbs for Genus® Fli, Genus® Orbit and Genus® Orbit Jet

|               |           |       |        |
|---------------|-----------|-------|--------|
| Standard bulb | 15W x 18" | 25/Cs | 794909 |
| Standard bulb | 15W x 18" | 24/Cs | 794910 |
| Sleeved bulb  | 15W x 18" | 25/Cs | 794911 |
| Sleeved bulb  | 15W x 18" | 24/Cs | 794912 |

### 36W x 16" bulbs for Genus® Spectra and Genus® Spectra Compact

|               |           |       |        |
|---------------|-----------|-------|--------|
| Standard bulb | 36W x 16" | 10/Pk | 794913 |
| Sleeved bulb  | 36W x 16" | 10/Pk | 794914 |

### Glue Boards







| Product Name                                     | Description | Packaging  | Univar # |
|--|-------------|------------|----------|
| Brandenburg Universal Glue Board with Pheromone* | Black       | 12 x 25/Cs | 794916   |

\*Brandenburg Universal Glue Boards with Pheromone fits all Genus® Fly Traps

### UV Bulbs by Part Number

| Product Name                                       | Units per case | Univar # |
|--|----------------|----------|
| Electrosect 15 W Bulb Standard - Pack of 25        | 25             | 794909   |
| Electrosect 15 W Bulb Standard - 12 x 2 Pack       | 24             | 794910   |
| Electrosect 15 W Bulb Sleeved - Pack of 25         | 25             | 794911   |
| Electrosect 15 W Bulb Sleeved - 12 x 2 Pack        | 24             | 794912   |
| Electrosect 36 W Bulb Standard - Pack of 10        | 10             | 794913   |
| Electrosect 36 W Bulb Sleeved - Pack of 10         | 10             | 794914   |
| Eclipse 15 W Bulb Standard, White - 12 x 2 Pack    | 24             | 801576   |
| Eclipse 15 W Bulb BLB Standard, Black - Pack of 25 | 25             | 801577   |

# Genus<sup>®</sup> APPROPRIATE APPLICATION USES

|   |                          | Genus <sup>®</sup><br>ORBIT | Genus <sup>®</sup><br>ORBITJET | Genus <sup>®</sup><br>SPECTRA | Genus <sup>®</sup><br>SPECTRA<br>COMPACT | Genus <sup>®</sup><br>FLJ | Genus <sup>®</sup><br>ECLIPSE |
|---|--------------------------|-----------------------------|--------------------------------|-------------------------------|--|---------------------------|-------------------------------|
| <b>RESTAURANTS</b>  |                          |                             |                                |                               |  |                           |                               |
|    | Kitchen Area             | ●                           |                                | ●                             | ●  | ●                         |                               |
|   | Dining area              |                             |                                | ●                             | ●  |                           | ●                             |
|   | Storage area             | ●                           |                                | ●                             | ●  | ●                         |                               |
|   | Trash area               | ●                           |                                | ●                             | ●  | ●                         |                               |
|   | Food preparation area    | ●                           |                                | ●                             | ●  | ●                         |                               |
|   | Bar area/tight space     |                             |                                |                               | ●  |                           | ●                             |
|   | Wet/wash down area       |                             | ●                              |                               |  |                           |                               |
| <b>FOOD PROCESSING PLANTS</b>   |                          |                             |                                |                               |  |                           |                               |
|    | Dry production area      | ●                           |                                | ●                             | ●  | ●                         |                               |
|   | Wet/wash down            |                             | ●                              |                               |  |                           |                               |
|   | Storage area             | ●                           |                                | ●                             | ●  | ●                         |                               |
|   | Trash area               | ●                           |                                | ●                             | ●  | ●                         |                               |
|   | Warehouse area           | ●                           |                                | ●                             | ●  | ●                         |                               |
|   | Tight space              |                             |                                |                               | ●  |                           |                               |
|   | Employee dining          |                             |                                |                               | ●  |                           | ●                             |
| <b>SUPERMARKETS / GROCERIES</b>   |                          |                             |                                |                               |  |                           |                               |
|   | Deli/meat/fish/produce   | ●                           |                                | ●                             | ●  | ●                         |                               |
|   | Warehouse/receiving      | ●                           |                                | ●                             | ●  | ●                         |                               |
|   | Areas with tight space   |                             |                                |                               | ●  |                           | ●                             |
| <b>HEALTHCARE / HOSPITALS / PHARMACEUTICAL / LABORATORIES</b>                       |                          |                             |                                |                               |  |                           |                               |
|  | Public areas             |                             |                                |                               | ●  |                           | ●                             |
|   | Receiving/delivery areas | ●                           |                                | ●                             | ●  | ●                         |                               |
|   | Storage                  | ●                           |                                | ●                             | ●  | ●                         |                               |
|   | Non-public areas         | ●                           |                                | ●                             | ●  | ●                         |                               |
| <b>OFFICE BUILDINGS</b>   |                          |                             |                                |                               |  |                           |                               |
|  | Dining areas             |                             |                                | ●                             | ●  |                           | ●                             |
|   | Receiving areas          | ●                           |                                | ●                             | ●  | ●                         |                               |
|   | Public/common areas      |                             |                                | ●                             | ●  |                           | ●                             |
| <b>SHOPPING MALLS</b>   |                          |                             |                                |                               |  |                           |                               |
|  | Public areas             |                             |                                |                               | ●  |                           | ●                             |
|   | Non-public areas         | ●                           |                                | ●                             | ●  | ●                         |                               |
|   | Food courts              | ●                           |                                | ●                             | ●  | ●                         | ●                             |
| <b>HOTELS / MOTELS</b>  |                          |                             |                                |                               |  |                           |                               |
|  | Public areas             |                             |                                |                               | ●  |                           | ●                             |
|   | Receiving/delivery areas | ●                           |                                | ●                             | ●  | ●                         |                               |
|   | Trash                    | ●                           |                                | ●                             | ●  | ●                         |                               |
|   | Kitchen/food prep        | ●                           |                                | ●                             | ●  | ●                         |                               |
|   | Storage                  | ●                           |                                | ●                             | ●  | ●                         |                               |
|   | Non-public areas         | ●                           |                                | ●                             | ●  | ●                         |                               |



BrandenburgNA  
1318 Ashby Rd.  
St. Louis  
MO 63132

Phone: 314-567-4101  
Email: sales@b-onena.com  
Web: www.b-onena.com