

Model 120-3 and 120-3R

1/4" Standard Pipe
Thread

Dist. (ft)	Effective Distance	Nozzle Angle	PSI	GPM	Speed (Miles Per Hour)								
					2	4	5	6	8	10	12	14	15
3	3	DOWN	30	1.7	140	70	56	47	35	28	23	20	19
3	3	DOWN	40	2	165	83	66	55	41	33	28	24	22
3	3	DOWN	50	2.2	182	91	73	61	45	36	30	26	24

- Shaded area shows **gallons per acre**. Water used for all calculations at a height of 4 ft above ground level. Calculations are for a single nozzle, please adjust numbers according to your setup. (For example: Two nozzles would require doubling the numbers in the table.)
- This nozzle fitting is 1/4" male Standard Pipe Thread and requires a 3/8" supply line.
- Two nozzles on the same supply line require a supply line two sizes larger than the nozzle size. (Two 1/4" nozzles should have a 1/2" supply line.)

Other Models Available:

Standard Band

Model	Thread Size	PSI range	Distance	Speed Range	GPM	Gallons / Acre
125	1/4"	30 – 40	17 ft	1 – 7 mph	1.7 - 2	7.8 – 64
140	1/4"	30 – 50	18 ft	2 – 15 mph	2 – 2.7	4 – 41
187	3/8"	30 – 50	20 ft	2 – 15 mph	3.6 – 4.8	6.4 – 64
265	1/2"	30 – 50	21 ft	2 – 15 mph	6.8 – 8.8	11 – 112
375	3/4"	30 – 50	23 ft	2 – 15 mph	14.4 – 18.8	22 -216
437	3/4"	30 – 50	31 ft	2 – 15 mph	18.5 – 24.2	21 – 203
500	1"	30 – 50	21.5 ft	4 – 30 mph	29 – 37	24 – 229
504	1"	30 – 50	41 ft	2 – 15 mph	29 – 37	24 – 229

Narrow Band

Model	Thread Size	PSI range	Distance	Speed Range	GPM	Gallons / Acre
120-3	1/4"	30 – 50	3 ft	2 – 15 mph	1.7 – 2.2	19 – 181
120-5	1/4"	30 – 50	5 ft	2 – 15 mph	1.7 – 2.2	11 - 109
180-6	3/8"	30 – 50	6 ft	2 – 15 mph	3.6 – 4.8	20 – 198
180-10	3/8"	30 – 50	10 ft	2 – 15 mph	3.6 – 4.8	12 – 109
260-5	1/2"	30 – 50	5 ft	2 – 15 mph	6.8 – 8.8	45 – 435
260-11	1/2"	30 – 50	11 ft	2 – 15 mph	6.8 – 8.8	20 -198
370	3/4"	30 – 50	10 ft	2 – 15 mph	14.4 – 18.8	24 – 233

Model 120-5 and 120-5R

1/4" Standard Pipe
Thread

Dist. (ft)	Effective Distance	Nozzle Angle	PSI	GPM	Speed (Miles Per Hour)								
					2	4	5	6	8	10	12	14	15
5	5	DOWN	30	1.7	84	42	34	28	21	17	14	12	11
5	5	DOWN	40	2	99	50	40	33	25	20	17	14	13
5	5	DOWN	50	2.2	109	54	44	36	27	22	18	16	15

- Shaded area shows **gallons per acre**. Water used for all calculations at a height of 4 ft above ground level. Calculations are for a single nozzle, please adjust numbers according to your setup. (For example: Two nozzles would require doubling the numbers in the table.)
- This nozzle fitting is 1/4" male Standard Pipe Thread and requires a 3/8" supply line.
- Two nozzles on the same supply line require a supply line two sizes larger than the nozzle size. (Two 1/4" nozzles should have a 1/2" supply line.)

Other Models Available:

Standard Band

Model	Thread Size	PSI range	Distance	Speed Range	GPM	Gallons / Acre
125	1/4"	30 - 40	17 ft	1 - 7 mph	1.7 - 2	7.8 - 64
140	1/4"	30 - 50	18 ft	2 - 15 mph	2 - 2.7	4 - 41
187	3/8"	30 - 50	20 ft	2 - 15 mph	3.6 - 4.8	6.4 - 64
265	1/2"	30 - 50	21 ft	2 - 15 mph	6.8 - 8.8	11 - 112
375	3/4"	30 - 50	23 ft	2 - 15 mph	14.4 - 18.8	22 - 216
437	3/4"	30 - 50	31 ft	2 - 15 mph	18.5 - 24.2	21 - 203
500	1"	30 - 50	21.5 ft	4 - 30 mph	29 - 37	24 - 229
504	1"	30 - 50	41 ft	2 - 15 mph	29 - 37	24 - 229

Narrow Band

Model	Thread Size	PSI range	Distance	Speed Range	GPM	Gallons / Acre
120-3	1/4"	30 - 50	3 ft	2 - 15 mph	1.7 - 2.2	19 - 181
120-5	1/4"	30 - 50	5 ft	2 - 15 mph	1.7 - 2.2	11 - 109
180-6	3/8"	30 - 50	6 ft	2 - 15 mph	3.6 - 4.8	20 - 198
180-10	3/8"	30 - 50	10 ft	2 - 15 mph	3.6 - 4.8	12 - 109
260-5	1/2"	30 - 50	5 ft	2 - 15 mph	6.8 - 8.8	45 - 435
260-11	1/2"	30 - 50	11 ft	2 - 15 mph	6.8 - 8.8	20 - 198
370	3/4"	30 - 50	10 ft	2 - 15 mph	14.4 - 18.8	24 - 233

Model 125 and 125-R

1/4" Standard Pipe
Thread

Dist. (ft)	Effective Distance	Nozzle Angle	PSI	GPM	Speed (Miles Per Hour)						
					1	2	3	4	5	6	7
17	15.5	LEVEL	30	1.7	54	27	18	13	11	9	7.8
17	15.5	LEVEL	40	2	64	32	21	16	13	11	9.1

- Shaded

area shows **gallons per acre**. Water used for all calculations at a height of 4 ft above ground level.

Calculations are for a single nozzle, please adjust numbers according to your setup. (For example: Two nozzles would require doubling the numbers in the table.)

- This nozzle fitting is 1/4" male Standard Pipe Thread and requires a 3/8" supply line.
- Two nozzles on the same supply line require a supply line two sizes larger than the nozzle size. (Two 1/4" nozzles should have a 1/2" supply line.)

Other Models Available:

Standard Band

Model	Thread Size	PSI range	Distance	Speed Range	GPM	Gallons / Acre
125	¼"	30 – 40	17 ft	1 – 7 mph	1.7 - 2	7.8 – 64
140	¼"	30 – 50	18 ft	2 – 15 mph	2 – 2.7	4 – 41
187	3/8"	30 – 50	20 ft	2 – 15 mph	3.6 – 4.8	6.4 – 64
265	½"	30 – 50	21 ft	2 – 15 mph	6.8 – 8.8	11 – 112
375	¾"	30 – 50	23 ft	2 – 15 mph	14.4 – 18.8	22 -216
437	¾"	30 – 50	31 ft	2 – 15 mph	18.5 – 24.2	21 – 203
500	1"	30 – 50	21.5 ft	4 – 30 mph	29 – 37	24 – 229
504	1"	30 – 50	41 ft	2 – 15 mph	29 – 37	24 – 229

Narrow Band

Model	Thread Size	PSI range	Distance	Speed Range	GPM	Gallons / Acre
120-3	¼"	30 – 50	3 ft	2 – 15 mph	1.7 – 2.2	19 – 181
120-5	¼"	30 – 50	5 ft	2 – 15 mph	1.7 – 2.2	11 - 109
180-6	3/8"	30 – 50	6 ft	2 – 15 mph	3.6 – 4.8	20 – 198
180-10	3/8"	30 – 50	10 ft	2 – 15 mph	3.6 – 4.8	12 – 109
260-5	½"	30 – 50	5 ft	2 – 15 mph	6.8 – 8.8	45 – 435
260-11	½"	30 – 50	11 ft	2 – 15 mph	6.8 – 8.8	20 -198
370	¾"	30 – 50	10 ft	2 – 15 mph	14.4 – 18.8	24 – 233

Model 140 and 140-R

1/4" Standard Pipe
Thread

Dist. (ft)	Effective Distance	Nozzle Angle	PSI	GPM	Speed (Miles Per Hour)								
					2	4	5	6	8	10	12	14	15
18	16.5	LEVEL	30	2	30	15	12	10	7.5	6	5	4.3	4
18	16.5	LEVEL	40	2.4	36	18	14	12	9	7	6	5.1	4.8
18	16.5	LEVEL	50	2.7	41	20	16	14	10	8	6.8	5.8	5.4

- Shaded area shows **gallons per acre**. Water used for all calculations at a height of 4 ft above ground level. Calculations are for a single nozzle, please adjust numbers according to your setup. (For example: Two nozzles would require doubling the numbers in the table.)
- This nozzle fitting is 1/4" male Standard Pipe Thread and requires a 3/8" supply line.
- Two nozzles on the same supply line require a supply line two sizes larger than the nozzle size. (Two 1/4" nozzles should have a 1/2" supply line.)

Other Models Available:

Standard Band

Model	Thread Size	PSI range	Distance	Speed Range	GPM	Gallons / Acre
125	¼"	30 – 40	17 ft	1 – 7 mph	1.7 - 2	7.8 – 64
140	¼"	30 – 50	18 ft	2 – 15 mph	2 – 2.7	4 – 41
187	3/8"	30 – 50	20 ft	2 – 15 mph	3.6 – 4.8	6.4 – 64
265	½"	30 – 50	21 ft	2 – 15 mph	6.8 – 8.8	11 – 112
375	¾"	30 – 50	23 ft	2 – 15 mph	14.4 – 18.8	22 -216
437	¾"	30 – 50	31 ft	2 – 15 mph	18.5 – 24.2	21 – 203
500	1"	30 – 50	21.5 ft	4 – 30 mph	29 – 37	24 – 229
504	1"	30 – 50	41 ft	2 – 15 mph	29 – 37	24 – 229

Narrow Band

Model	Thread Size	PSI range	Distance	Speed Range	GPM	Gallons / Acre
120-3	¼"	30 – 50	3 ft	2 – 15 mph	1.7 – 2.2	19 – 181
120-5	¼"	30 – 50	5 ft	2 – 15 mph	1.7 – 2.2	11 - 109
180-6	3/8"	30 – 50	6 ft	2 – 15 mph	3.6 – 4.8	20 – 198
180-10	3/8"	30 – 50	10 ft	2 – 15 mph	3.6 – 4.8	12 – 109
260-5	½"	30 – 50	5 ft	2 – 15 mph	6.8 – 8.8	45 – 435
260-11	½"	30 – 50	11 ft	2 – 15 mph	6.8 – 8.8	20 -198
370	¾"	30 – 50	10 ft	2 – 15 mph	14.4 – 18.8	24 – 233

Model 180-6 and 180-6R

3/8" Standard Pipe
Thread

Dist. (ft)	Effective Distance	Nozzle Angle	PSI	GPM	Speed (Miles Per Hour)								
					2	4	5	6	8	10	12	14	15
6	6	DOWN	30	3.6	149	74	59	50	37	30	25	21	20
6	6	DOWN	40	4.3	177	89	71	59	44	35	30	25	24
6	6	DOWN	50	4.8	198	99	79	66	50	40	33	28	26

- Shaded area shows **gallons per acre**. Water used for all calculations at a height of 4 ft above ground level. Calculations are for a single nozzle, please adjust numbers according to your setup. (For example: Two nozzles would require doubling the numbers in the table.)
- This nozzle fitting is 1/4" male Standard Pipe Thread and requires a 3/8" supply line.
- Two nozzles on the same supply line require a supply line two sizes larger than the nozzle size. (Two 1/4" nozzles should have a 1/2" supply line.)

Other Models Available:

Standard Band

Model	Thread Size	PSI range	Distance	Speed Range	GPM	Gallons / Acre
125	1/4"	30 - 40	17 ft	1 - 7 mph	1.7 - 2	7.8 - 64
140	1/4"	30 - 50	18 ft	2 - 15 mph	2 - 2.7	4 - 41
187	3/8"	30 - 50	20 ft	2 - 15 mph	3.6 - 4.8	6.4 - 64
265	1/2"	30 - 50	21 ft	2 - 15 mph	6.8 - 8.8	11 - 112
375	3/4"	30 - 50	23 ft	2 - 15 mph	14.4 - 18.8	22 - 216
437	3/4"	30 - 50	31 ft	2 - 15 mph	18.5 - 24.2	21 - 203
500	1"	30 - 50	21.5 ft	4 - 30 mph	29 - 37	24 - 229
504	1"	30 - 50	41 ft	2 - 15 mph	29 - 37	24 - 229

Narrow Band

Model	Thread Size	PSI range	Distance	Speed Range	GPM	Gallons / Acre
120-3	1/4"	30 - 50	3 ft	2 - 15 mph	1.7 - 2.2	19 - 181
120-5	1/4"	30 - 50	5 ft	2 - 15 mph	1.7 - 2.2	11 - 109
180-6	3/8"	30 - 50	6 ft	2 - 15 mph	3.6 - 4.8	20 - 198
180-10	3/8"	30 - 50	10 ft	2 - 15 mph	3.6 - 4.8	12 - 109
260-5	1/2"	30 - 50	5 ft	2 - 15 mph	6.8 - 8.8	45 - 435
260-11	1/2"	30 - 50	11 ft	2 - 15 mph	6.8 - 8.8	20 - 198
370	3/4"	30 - 50	10 ft	2 - 15 mph	14.4 - 18.8	24 - 233

Model 180-10 and 180-10R

3/8" Standard Pipe
Thread

Dist. (ft)	Effective Distance	Nozzle Angle	PSI	GPM	Speed (Miles Per Hour)								
					2	4	5	6	8	10	12	14	15
10	10	DOWN	30	3.6	89	45	36	30	22	18	15	13	12
10	10	DOWN	40	4.3	106	53	43	35	27	21	18	15	14
10	10	DOWN	50	4.8	119	59	48	40	30	24	20	17	16

- Shaded area shows **gallons per acre**. Water used for all calculations at a height of 4 ft above ground level. Calculations are for a single nozzle, please adjust numbers according to your setup. (For example: Two nozzles would require doubling the numbers in the table.)
- This nozzle fitting is 1/4" male Standard Pipe Thread and requires a 3/8" supply line.
- Two nozzles on the same supply line require a supply line two sizes larger than the nozzle size. (Two 1/4" nozzles should have a 1/2" supply line.)

Other Models Available:

Standard Band

Model	Thread Size	PSI range	Distance	Speed Range	GPM	Gallons / Acre
125	¼"	30 – 40	17 ft	1 – 7 mph	1.7 - 2	7.8 – 64
140	¼"	30 – 50	18 ft	2 – 15 mph	2 – 2.7	4 – 41
187	3/8"	30 – 50	20 ft	2 – 15 mph	3.6 – 4.8	6.4 – 64
265	½"	30 – 50	21 ft	2 – 15 mph	6.8 – 8.8	11 – 112
375	¾"	30 – 50	23 ft	2 – 15 mph	14.4 – 18.8	22 -216
437	¾"	30 – 50	31 ft	2 – 15 mph	18.5 – 24.2	21 – 203
500	1"	30 – 50	21.5 ft	4 – 30 mph	29 – 37	24 – 229
504	1"	30 – 50	41 ft	2 – 15 mph	29 – 37	24 – 229

Narrow Band

Model	Thread Size	PSI range	Distance	Speed Range	GPM	Gallons / Acre
120-3	¼"	30 – 50	3 ft	2 – 15 mph	1.7 – 2.2	19 – 181
120-5	¼"	30 – 50	5 ft	2 – 15 mph	1.7 – 2.2	11 - 109
180-6	3/8"	30 – 50	6 ft	2 – 15 mph	3.6 – 4.8	20 – 198
180-10	3/8"	30 – 50	10 ft	2 – 15 mph	3.6 – 4.8	12 – 109
260-5	½"	30 – 50	5 ft	2 – 15 mph	6.8 – 8.8	45 – 435
260-11	½"	30 – 50	11 ft	2 – 15 mph	6.8 – 8.8	20 -198
370	¾"	30 – 50	10 ft	2 – 15 mph	14.4 – 18.8	24 – 233

Model 187 and 187-R

3/8" Standard Pipe
Thread

Dist. (ft)	Effective Distance	Nozzle Angle	PSI	GPM	Speed (Miles Per Hour)								
					2	4	5	6	8	10	12	14	15
20	18.5	LEVEL	30	3.6	48	24	19	16	12	9.6	8	6.9	6.4
20	18.5	LEVEL	40	4.3	58	29	23	19	14	12	9.6	8.2	7.7
20	18.5	LEVEL	50	4.8	64	32	26	21	16	13	11	9.2	8.6

- Shaded area shows **gallons per acre**. Water used for all calculations at a height of 4 ft above ground level. Calculations are for a single nozzle, please adjust numbers according to your setup. (For example: Two nozzles would require doubling the numbers in the table.)
- This nozzle fitting is 3/8" male Standard Pipe Thread and requires a 1/2" supply line.
- Two nozzles on the same supply line require a supply line two sizes larger than the nozzle size. (Two 3/8" nozzles should have a 3/4" supply line.)

Other Models Available:

Standard Band

Model	Thread Size	PSI range	Distance	Speed Range	GPM	Gallons / Acre
125	¼"	30 – 40	17 ft	1 – 7 mph	1.7 - 2	7.8 – 64
140	¼"	30 – 50	18 ft	2 – 15 mph	2 – 2.7	4 – 41
187	3/8"	30 – 50	20 ft	2 – 15 mph	3.6 – 4.8	6.4 – 64
265	½"	30 – 50	21 ft	2 – 15 mph	6.8 – 8.8	11 – 112
375	¾"	30 – 50	23 ft	2 – 15 mph	14.4 – 18.8	22 -216
437	¾"	30 – 50	31 ft	2 – 15 mph	18.5 – 24.2	21 – 203
500	1"	30 – 50	21.5 ft	4 – 30 mph	29 – 37	24 – 229
504	1"	30 – 50	41 ft	2 – 15 mph	29 – 37	24 – 229

Narrow Band

Model	Thread Size	PSI range	Distance	Speed Range	GPM	Gallons / Acre
120-3	¼"	30 – 50	3 ft	2 – 15 mph	1.7 – 2.2	19 – 181
120-5	¼"	30 – 50	5 ft	2 – 15 mph	1.7 – 2.2	11 - 109
180-6	3/8"	30 – 50	6 ft	2 – 15 mph	3.6 – 4.8	20 – 198
180-10	3/8"	30 – 50	10 ft	2 – 15 mph	3.6 – 4.8	12 – 109
260-5	½"	30 – 50	5 ft	2 – 15 mph	6.8 – 8.8	45 – 435
260-11	½"	30 – 50	11 ft	2 – 15 mph	6.8 – 8.8	20 -198
370	¾"	30 – 50	10 ft	2 – 15 mph	14.4 – 18.8	24 – 233

Model 260-5 and 260-5R

1/2" Standard Pipe
Thread

Dist. (ft)	Effective Distance	Nozzle Angle	PSI	GPM	Speed (Miles Per Hour)								
					2	4	5	6	8	10	12	14	15
5	5	DOWN	30	6.8	337	168	135	112	84	67	56	48	45
5	5	DOWN	40	8	396	198	158	132	99	79	66	57	53
5	5	DOWN	50	8.8	436	218	174	145	109	87	73	62	58

- Shaded area shows **gallons per acre**. Water used for all calculations at a height of 4 ft above ground level. Calculations are for a single nozzle, please adjust numbers according to your setup. (For example: Two nozzles would require doubling the numbers in the table.)
- This nozzle fitting is 1/4" male Standard Pipe Thread and requires a 3/8" supply line.
- Two nozzles on the same supply line require a supply line two sizes larger than the nozzle size. (Two 1/4" nozzles should have a 1/2" supply line.)

Other Models Available:

Standard Band

Model	Thread Size	PSI range	Distance	Speed Range	GPM	Gallons / Acre
125	1/4"	30 – 40	17 ft	1 – 7 mph	1.7 - 2	7.8 – 64
140	1/4"	30 – 50	18 ft	2 – 15 mph	2 – 2.7	4 – 41
187	3/8"	30 – 50	20 ft	2 – 15 mph	3.6 – 4.8	6.4 – 64
265	1/2"	30 – 50	21 ft	2 – 15 mph	6.8 – 8.8	11 – 112
375	3/4"	30 – 50	23 ft	2 – 15 mph	14.4 – 18.8	22 -216
437	3/4"	30 – 50	31 ft	2 – 15 mph	18.5 – 24.2	21 – 203
500	1"	30 – 50	21.5 ft	4 – 30 mph	29 – 37	24 – 229
504	1"	30 – 50	41 ft	2 – 15 mph	29 – 37	24 – 229

Narrow Band

Model	Thread Size	PSI range	Distance	Speed Range	GPM	Gallons / Acre
120-3	1/4"	30 – 50	3 ft	2 – 15 mph	1.7 – 2.2	19 – 181
120-5	1/4"	30 – 50	5 ft	2 – 15 mph	1.7 – 2.2	11 - 109
180-6	3/8"	30 – 50	6 ft	2 – 15 mph	3.6 – 4.8	20 – 198
180-10	3/8"	30 – 50	10 ft	2 – 15 mph	3.6 – 4.8	12 – 109
260-5	1/2"	30 – 50	5 ft	2 – 15 mph	6.8 – 8.8	45 – 435
260-11	1/2"	30 – 50	11 ft	2 – 15 mph	6.8 – 8.8	20 -198
370	3/4"	30 – 50	10 ft	2 – 15 mph	14.4 – 18.8	24 – 233

Model 260-11 and 260-11R

1/2" Standard Pipe
Thread

Dist. (ft)	Effective Distance	Nozzle Angle	PSI	GPM	Speed (Miles Per Hour)								
					2	4	5	6	8	10	12	14	15
11	11	DOWN	30	6.8	153	77	61	51	38	31	26	22	20
11	11	DOWN	40	8	180	90	72	60	45	36	30	26	24
11	11	DOWN	50	8.8	198	99	79	66	50	40	33	28	26

- Shaded area shows **gallons per acre**. Water used for all calculations at a height of 4 ft above ground level. Calculations are for a single nozzle, please adjust numbers according to your setup. (For example: Two nozzles would require doubling the numbers in the table.)
- This nozzle fitting is 1/4" male Standard Pipe Thread and requires a 3/8" supply line.
- Two nozzles on the same supply line require a supply line two sizes larger than the nozzle size. (Two 1/4" nozzles should have a 1/2" supply line.)

Other Models Available:

Standard Band

Model	Thread Size	PSI range	Distance	Speed Range	GPM	Gallons / Acre
125	¼"	30 – 40	17 ft	1 – 7 mph	1.7 - 2	7.8 – 64
140	¼"	30 – 50	18 ft	2 – 15 mph	2 – 2.7	4 – 41
187	3/8"	30 – 50	20 ft	2 – 15 mph	3.6 – 4.8	6.4 – 64
265	½"	30 – 50	21 ft	2 – 15 mph	6.8 – 8.8	11 – 112
375	¾"	30 – 50	23 ft	2 – 15 mph	14.4 – 18.8	22 -216
437	¾"	30 – 50	31 ft	2 – 15 mph	18.5 – 24.2	21 – 203
500	1"	30 – 50	21.5 ft	4 – 30 mph	29 – 37	24 – 229
504	1"	30 – 50	41 ft	2 – 15 mph	29 – 37	24 – 229

Narrow Band

Model	Thread Size	PSI range	Distance	Speed Range	GPM	Gallons / Acre
120-3	¼"	30 – 50	3 ft	2 – 15 mph	1.7 – 2.2	19 – 181
120-5	¼"	30 – 50	5 ft	2 – 15 mph	1.7 – 2.2	11 - 109
180-6	3/8"	30 – 50	6 ft	2 – 15 mph	3.6 – 4.8	20 – 198
180-10	3/8"	30 – 50	10 ft	2 – 15 mph	3.6 – 4.8	12 – 109
260-5	½"	30 – 50	5 ft	2 – 15 mph	6.8 – 8.8	45 – 435
260-11	½"	30 – 50	11 ft	2 – 15 mph	6.8 – 8.8	20 -198
370	¾"	30 – 50	10 ft	2 – 15 mph	14.4 – 18.8	24 – 233

Model 265 and 265-R

1/2" Standard Pipe
Thread

Dist. (ft)	Effective Distance	Nozzle Angle	PSI	GPM	Speed (Miles Per Hour)								
					2	4	5	6	8	10	12	14	15
21	19.5	LEVEL	30	6.8	86	43	35	26	22	17	14	12	11
21	19.5	LEVEL	40	8	102	51	41	34	25	20	17	14	13
21	19.5	LEVEL	50	8.8	112	56	45	37	28	22	19	16	15

- Shaded area shows **gallons per acre**. Water used for all calculations at a height of 4 ft above ground level. Calculations are for a single nozzle, please adjust numbers according to your setup. (For example: Two nozzles would require doubling the numbers in the table.)
- This nozzle fitting is 1/2" male Standard Pipe Thread and requires a 3/4" supply line.
- Two nozzles on the same supply line require a supply line two sizes larger than the nozzle size. (Two 1/2" nozzles should have a 1" supply line.)

Other Models Available:

Standard Band

Model	Thread Size	PSI range	Distance	Speed Range	GPM	Gallons / Acre
125	¼"	30 – 40	17 ft	1 – 7 mph	1.7 - 2	7.8 – 64
140	¼"	30 – 50	18 ft	2 – 15 mph	2 – 2.7	4 – 41
187	3/8"	30 – 50	20 ft	2 – 15 mph	3.6 – 4.8	6.4 – 64
265	½"	30 – 50	21 ft	2 – 15 mph	6.8 – 8.8	11 – 112
375	¾"	30 – 50	23 ft	2 – 15 mph	14.4 – 18.8	22 -216
437	¾"	30 – 50	31 ft	2 – 15 mph	18.5 – 24.2	21 – 203
500	1"	30 – 50	21.5 ft	4 – 30 mph	29 – 37	24 – 229
504	1"	30 – 50	41 ft	2 – 15 mph	29 – 37	24 – 229

Narrow Band

Model	Thread Size	PSI range	Distance	Speed Range	GPM	Gallons / Acre
120-3	¼"	30 – 50	3 ft	2 – 15 mph	1.7 – 2.2	19 – 181
120-5	¼"	30 – 50	5 ft	2 – 15 mph	1.7 – 2.2	11 - 109
180-6	3/8"	30 – 50	6 ft	2 – 15 mph	3.6 – 4.8	20 – 198
180-10	3/8"	30 – 50	10 ft	2 – 15 mph	3.6 – 4.8	12 – 109
260-5	½"	30 – 50	5 ft	2 – 15 mph	6.8 – 8.8	45 – 435
260-11	½"	30 – 50	11 ft	2 – 15 mph	6.8 – 8.8	20 -198
370	¾"	30 – 50	10 ft	2 – 15 mph	14.4 – 18.8	24 – 233

Model 370 and 370-R

3/4" Standard Pipe
Thread

Dist. (ft)	Effective Distance	Nozzle Angle	PSI	GPM	Speed (Miles Per Hour)								
					4	6	8	10	14	16	20	24	30
10	10	DOWN	30	14.4	178	119	89	71	51	45	36	30	24
10	10	DOWN	40	16.7	207	138	103	83	59	52	41	34	28
10	10	DOWN	50	18.8	233	155	116	93	66	58	47	39	31

- Shaded area shows **gallons per acre**. Water used for all calculations at a height of 4 ft above ground level. Calculations are for a single nozzle, please adjust numbers according to your setup. (For example: Two nozzles would require doubling the numbers in the table.)
- This nozzle fitting is 1/4" male Standard Pipe Thread and requires a 3/8" supply line.
- Two nozzles on the same supply line require a supply line two sizes larger than the nozzle size. (Two 1/4" nozzles should have a 1/2" supply line.)

Other Models Available:

Standard Band

Model	Thread Size	PSI range	Distance	Speed Range	GPM	Gallons / Acre
125	¼"	30 – 40	17 ft	1 – 7 mph	1.7 - 2	7.8 – 64
140	¼"	30 – 50	18 ft	2 – 15 mph	2 – 2.7	4 – 41
187	3/8"	30 – 50	20 ft	2 – 15 mph	3.6 – 4.8	6.4 – 64
265	½"	30 – 50	21 ft	2 – 15 mph	6.8 – 8.8	11 – 112
375	¾"	30 – 50	23 ft	2 – 15 mph	14.4 – 18.8	22 – 216
437	¾"	30 – 50	31 ft	2 – 15 mph	18.5 – 24.2	21 – 203
500	1"	30 – 50	21.5 ft	4 – 30 mph	29 – 37	24 – 229
504	1"	30 – 50	41 ft	2 – 15 mph	29 – 37	24 – 229

Narrow Band

Model	Thread Size	PSI range	Distance	Speed Range	GPM	Gallons / Acre
120-3	¼"	30 – 50	3 ft	2 – 15 mph	1.7 – 2.2	19 – 181
120-5	¼"	30 – 50	5 ft	2 – 15 mph	1.7 – 2.2	11 - 109
180-6	3/8"	30 – 50	6 ft	2 – 15 mph	3.6 – 4.8	20 – 198
180-10	3/8"	30 – 50	10 ft	2 – 15 mph	3.6 – 4.8	12 – 109
260-5	½"	30 – 50	5 ft	2 – 15 mph	6.8 – 8.8	45 – 435
260-11	½"	30 – 50	11 ft	2 – 15 mph	6.8 – 8.8	20 -198
370	¾"	30 – 50	10 ft	2 – 15 mph	14.4 – 18.8	24 – 233

Model 375 and 375-R

3/4" Standard Pipe
Thread

Dist. (ft)	Effective Distance	Nozzle Angle	PSI	GPM	Speed (Miles Per Hour)								
					2	4	5	6	8	10	12	14	15
23	21.5	LEVEL	30	14.4	166	83	66	55	41	33	28	24	22
23	21.5	LEVEL	40	16.7	193	96	77	64	48	38	32	27	26
23	21.5	LEVEL	50	18.8	216	108	87	72	54	43	36	31	29

- Shaded area shows **gallons per acre**. Water used for all calculations at a height of 4 ft above ground level. Calculations are for a single nozzle, please adjust numbers according to your setup. (For example: Two nozzles would require doubling the numbers in the table.)
- This nozzle fitting is 3/4" male Standard Pipe Thread and requires a 1" supply line.
- Two nozzles on the same supply line require a supply line two sizes larger than the nozzle size. (Two 3/4" nozzles should have a 1 1/4" supply line.)

Other Models Available:

Standard Band

Model	Thread Size	PSI range	Distance	Speed Range	GPM	Gallons / Acre
125	1/4"	30 – 40	17 ft	1 – 7 mph	1.7 - 2	7.8 – 64
140	1/4"	30 – 50	18 ft	2 – 15 mph	2 – 2.7	4 – 41
187	3/8"	30 – 50	20 ft	2 – 15 mph	3.6 – 4.8	6.4 – 64
265	1/2"	30 – 50	21 ft	2 – 15 mph	6.8 – 8.8	11 – 112
375	3/4"	30 – 50	23 ft	2 – 15 mph	14.4 – 18.8	22 -216
437	3/4"	30 – 50	31 ft	2 – 15 mph	18.5 – 24.2	21 – 203
500	1"	30 – 50	21.5 ft	4 – 30 mph	29 – 37	24 – 229
504	1"	30 – 50	41 ft	2 – 15 mph	29 – 37	24 – 229

Narrow Band

Model	Thread Size	PSI range	Distance	Speed Range	GPM	Gallons / Acre
120-3	1/4"	30 – 50	3 ft	2 – 15 mph	1.7 – 2.2	19 – 181
120-5	1/4"	30 – 50	5 ft	2 – 15 mph	1.7 – 2.2	11 - 109
180-6	3/8"	30 – 50	6 ft	2 – 15 mph	3.6 – 4.8	20 – 198
180-10	3/8"	30 – 50	10 ft	2 – 15 mph	3.6 – 4.8	12 – 109
260-5	1/2"	30 – 50	5 ft	2 – 15 mph	6.8 – 8.8	45 – 435
260-11	1/2"	30 – 50	11 ft	2 – 15 mph	6.8 – 8.8	20 -198
370	3/4"	30 – 50	10 ft	2 – 15 mph	14.4 – 18.8	24 – 233

Model 437 and 437-R

3/4" Standard Pipe
Thread

Dist. (ft)	Effective Distance	Nozzle Angle	PSI	GPM	Speed (Miles Per Hour)								
					2	4	5	6	8	10	12	14	15
31	29.5	UP	30	18.5	155	78	62	52	39	31	26	22	21
31	29.5	UP	40	21.5	180	90	72	60	45	36	30	26	24
31	29.5	UP	50	24.2	203	102	81	68	51	41	34	29	27

- Shaded area shows **gallons per acre**. Water used for all calculations at a height of 4 ft above ground level. Calculations are for a single nozzle, please adjust numbers according to your setup. (For example: Two nozzles would require doubling the numbers in the table.)
- This nozzle fitting is 3/4" male Standard Pipe Thread and requires a 1" supply line.
- Two nozzles on the same supply line require a supply line two sizes larger than the nozzle size. (Two 3/4" nozzles should have a 1 1/4" supply line.)

Other Models Available:

Standard Band

Model	Thread Size	PSI range	Distance	Speed Range	GPM	Gallons / Acre
125	1/4"	30 – 40	17 ft	1 – 7 mph	1.7 - 2	7.8 – 64
140	1/4"	30 – 50	18 ft	2 – 15 mph	2 – 2.7	4 – 41
187	3/8"	30 – 50	20 ft	2 – 15 mph	3.6 – 4.8	6.4 – 64
265	1/2"	30 – 50	21 ft	2 – 15 mph	6.8 – 8.8	11 – 112
375	3/4"	30 – 50	23 ft	2 – 15 mph	14.4 – 18.8	22 -216
437	3/4"	30 – 50	31 ft	2 – 15 mph	18.5 – 24.2	21 – 203
500	1"	30 – 50	21.5 ft	4 – 30 mph	29 – 37	24 – 229
504	1"	30 – 50	41 ft	2 – 15 mph	29 – 37	24 – 229

Narrow Band

Model	Thread Size	PSI range	Distance	Speed Range	GPM	Gallons / Acre
120-3	1/4"	30 – 50	3 ft	2 – 15 mph	1.7 – 2.2	19 – 181
120-5	1/4"	30 – 50	5 ft	2 – 15 mph	1.7 – 2.2	11 - 109
180-6	3/8"	30 – 50	6 ft	2 – 15 mph	3.6 – 4.8	20 – 198
180-10	3/8"	30 – 50	10 ft	2 – 15 mph	3.6 – 4.8	12 – 109
260-5	1/2"	30 – 50	5 ft	2 – 15 mph	6.8 – 8.8	45 – 435
260-11	1/2"	30 – 50	11 ft	2 – 15 mph	6.8 – 8.8	20 -198
370	3/4"	30 – 50	10 ft	2 – 15 mph	14.4 – 18.8	24 – 233

Model 500 and 500-R

1" Standard Pipe
Thread

Dist. (ft)	Effective Distance	Nozzle Angle	PSI	GPM	Speed (Miles Per Hour)											
					4	6	8	10	12	14	16	18	20	24	26	30
21.5	20	LEVEL	30	29	179	120	90	72	60	51	45	40	36	30	28	24
21.5	20	LEVEL	40	33	204	136	102	82	68	58	51	45	41	24	31	27
21.5	20	LEVEL	50	37	229	153	114	91	76	65	57	51	46	38	35	30

- Shaded area shows **gallons per acre**. Water used for all calculations at a height of 4 ft above ground level. Calculations are for a single nozzle, please adjust numbers according to your setup. (For example: Two nozzles would require doubling the numbers in the table.)
- This nozzle fitting is 1" male Standard Pipe Thread and requires a 1 1/4" supply line.
- Two nozzles on the same supply line require a supply line two sizes larger than the nozzle size. (Two 1" nozzles should have a 1 1/2" supply line.)

Other Models Available:

Standard Band

Model	Thread Size	PSI range	Distance	Speed Range	GPM	Gallons / Acre
125	1/4"	30 – 40	17 ft	1 – 7 mph	1.7 - 2	7.8 – 64
140	1/4"	30 – 50	18 ft	2 – 15 mph	2 – 2.7	4 – 41
187	3/8"	30 – 50	20 ft	2 – 15 mph	3.6 – 4.8	6.4 – 64
265	1/2"	30 – 50	21 ft	2 – 15 mph	6.8 – 8.8	11 – 112
375	3/4"	30 – 50	23 ft	2 – 15 mph	14.4 – 18.8	22 -216
437	3/4"	30 – 50	31 ft	2 – 15 mph	18.5 – 24.2	21 – 203
500	1"	30 – 50	21.5 ft	4 – 30 mph	29 – 37	24 – 229
504	1"	30 – 50	41 ft	2 – 15 mph	29 – 37	24 – 229

Narrow Band

Model	Thread Size	PSI range	Distance	Speed Range	GPM	Gallons / Acre
120-3	1/4"	30 – 50	3 ft	2 – 15 mph	1.7 – 2.2	19 – 181
120-5	1/4"	30 – 50	5 ft	2 – 15 mph	1.7 – 2.2	11 - 109
180-6	3/8"	30 – 50	6 ft	2 – 15 mph	3.6 – 4.8	20 – 198
180-10	3/8"	30 – 50	10 ft	2 – 15 mph	3.6 – 4.8	12 – 109
260-5	1/2"	30 – 50	5 ft	2 – 15 mph	6.8 – 8.8	45 – 435
260-11	1/2"	30 – 50	11 ft	2 – 15 mph	6.8 – 8.8	20 -198
370	3/4"	30 – 50	10 ft	2 – 15 mph	14.4 – 18.8	24 – 233

Model 504 and 504-R

1" Standard Pipe
Thread

Dist. (ft)	Effective Distance	Nozzle Angle	PSI	GPM	Speed (Miles Per Hour)											
					2	4	5	6	7	8	9	10	11	12	14	15
41	40	UP	30	29	179	90	72	60	51	45	40	36	33	30	26	24
41	40	UP	40	33	204	102	82	68	58	51	45	41	37	34	29	27
41	40	UP	50	37	229	114	92	76	65	57	51	46	42	38	33	31

- Shaded area shows **gallons per acre**. Water used for all calculations at a height of 4 ft above ground level. Calculations are for a single nozzle, please adjust numbers according to your setup. (For example: Two nozzles would require doubling the numbers in the table.)
- This nozzle fitting is 1" male Standard Pipe Thread and requires a 1 1/4" supply line.
- Two nozzles on the same supply line require a supply line two sizes larger than the nozzle size. (Two 1" nozzles should have a 1 1/2" supply line.)

Other Models Available:

Standard Band

Model	Thread Size	PSI range	Distance	Speed Range	GPM	Gallons / Acre
125	1/4"	30 – 40	17 ft	1 – 7 mph	1.7 - 2	7.8 – 64
140	1/4"	30 – 50	18 ft	2 – 15 mph	2 – 2.7	4 – 41
187	3/8"	30 – 50	20 ft	2 – 15 mph	3.6 – 4.8	6.4 – 64
265	1/2"	30 – 50	21 ft	2 – 15 mph	6.8 – 8.8	11 – 112
375	3/4"	30 – 50	23 ft	2 – 15 mph	14.4 – 18.8	22 – 216
437	3/4"	30 – 50	31 ft	2 – 15 mph	18.5 – 24.2	21 – 203
500	1"	30 – 50	21.5 ft	4 – 30 mph	29 – 37	24 – 229
504	1"	30 – 50	41 ft	2 – 15 mph	29 – 37	24 – 229

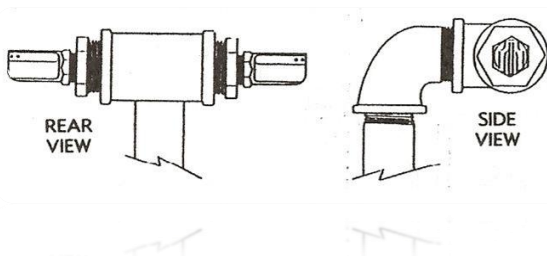
Narrow Band

Model	Thread Size	PSI range	Distance	Speed Range	GPM	Gallons / Acre
120-3	1/4"	30 – 50	3 ft	2 – 15 mph	1.7 – 2.2	19 – 181
120-5	1/4"	30 – 50	5 ft	2 – 15 mph	1.7 – 2.2	11 - 109
180-6	3/8"	30 – 50	6 ft	2 – 15 mph	3.6 – 4.8	20 – 198
180-10	3/8"	30 – 50	10 ft	2 – 15 mph	3.6 – 4.8	12 – 109
260-5	1/2"	30 – 50	5 ft	2 – 15 mph	6.8 – 8.8	45 – 435
260-11	1/2"	30 – 50	11 ft	2 – 15 mph	6.8 – 8.8	20 -198
370	3/4"	30 – 50	10 ft	2 – 15 mph	14.4 – 18.8	24 – 233



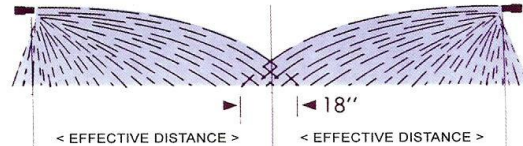
Nozzle Installation

1. Consult nozzle data sheet and be sure supply lines are adequate, especially if more than one nozzle is installed on the same supply line.
2. Angle nozzle to achieve desired distance as specified in chart.
3. In order to operate nozzles independently, install on separate supply lines with cut-off valves.
4. Nozzles should be mounted close enough together to ensure proper overlap behind spray vehicle.
5. Mounting nozzles on street elbows allows for quick and easy adjustment.



OPERATION

- (1) In multiple pass spraying, the end of the pattern should overlap approximately 18".



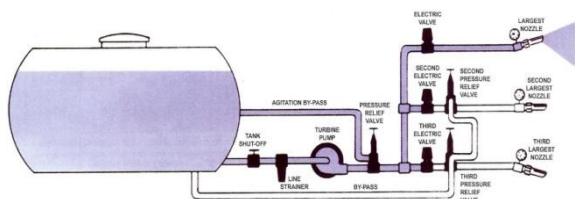
- (2) Use effective distance in feet for all calculations. See effective distance in feet in chart.
- (3) Below is a typical two nozzle installation showing center overlap.



- (4) Be sure to use enough water. University field tests have shown when applied with ground equipment, most chemicals work better with 25 or more gallons of water per acre.
- (5) A coarse mesh inline strainer may be necessary if tank or water supply becomes contaminated with large particles.
- (6) Small mesh nozzle strainers are not necessary due to the large orifice opening in these nozzles.
- (7) In some applications, except for the small nozzles, these nozzles can be operated at speeds up to thirty miles per hour.
- (8) With these nozzles, as with aerial and other methods of spraying, high and gusty wind can cause some pattern shifting. This can be minimized by spraying just above the crop or ground to be sprayed.

Always use good judgment when spraying. Don't spray in high winds. Always wear protective clothing and handle all chemicals with care.

Sample sprayer setup



Please contact your distributor for repair of damaged nozzles.