

# Model 9910-GS40GI Control Unit

**Sub Assembly —**  
9910-1923 Includes parts  
83-87, 89-99, 113 and 114.

9910-GS40GI Control Unit  
mounts directly on pump

**Bypass Hose Barb —**  
Connect directly to tank  
without restrictions  
or ball valves.

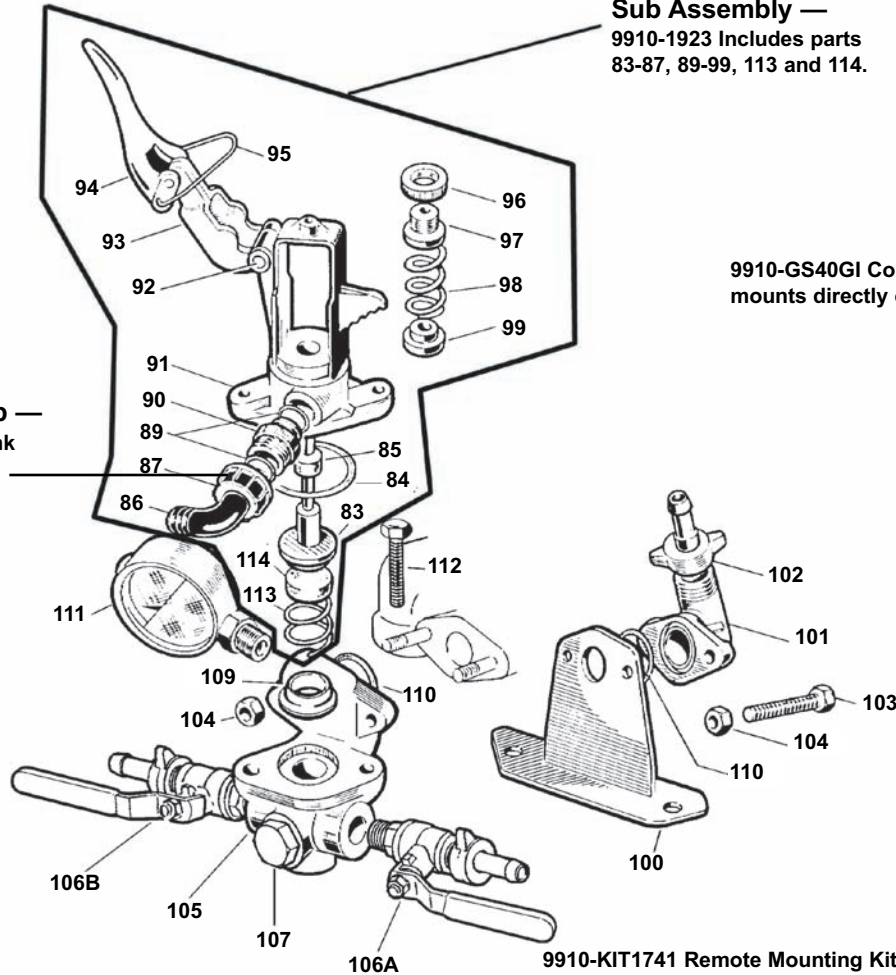


Figure 14

9910-KIT1741 Remote Mounting Kit includes  
mounting bracket and hose barb shown above.

Ref. No.	Part Number	Description	Qty.
83 <sup>1</sup>	9910-320433	Relief Valve Poppet Retainer	1
84 <sup>1</sup>	9910-320511	Gasket Seal O-Ring	1
85 <sup>1</sup>	9910-390140	Tension Spring Guide/Seal	1
86	9910-550460	Hose Barb 1/2"	1
87	9910-550450	Barb Nut	1
89	9910-180101	O-Ring	2
90	9910-550440	Threaded Adapter	1
91	9910-320410	Tension Spring Housing	1
92	9910-320480	Pin	1
93	9910-320460	Lever Guide	1
94	9910-320470	Pressure Release Lever	1
95	9910-320490	Locking Clip	1
96	9910-320450	Pressure Adjustment Nut	1
97	9910-320440	Threaded Guide	1
98	9910-110190	Tension Spring	1
98	9910-620810	Tension Spring (Opt.) (under 100 psi)	1

Ref. No.	Part Number	Description	Qty.
99	9910-230120	Tension Spring Retainer	1
100	9910-320406	Remote Discharge Mounting Bracket	1
101	9910-450145	Discharge Flange Housing	1
102	9910-110130	1/2" Hose Barb & Nut--(3/8" 9910-110131)	1
103	9910-160660	M8 x 35 Bolt	2
104	9910-390270	Nut	2
105	9910-620220	Relief Valve Body	1
106A	9910-KIT2497	Ball Valve (left)	1
106B	9910-130491	Ball Valve (right)	1
107	9910-130171	Plug	1
109 <sup>1</sup>	9910-450110	Spring Holder	1
110	9910-550350	O-Ring	1
111	9910-550545	Pressure Gauge (Oil-filled)	1
112	9910-180370	M8 x 25 Bolt	2
113 <sup>1</sup>	9910-320420	Tension Spring	1
114 <sup>1</sup>	9910-110122	Relief Valve Seat (Viton) (Std.)	1
114	9910-110121	Relief Valve Seat (Urethane)	1

Ref. No.	Description	Tightening Torque	
		In. Lbs.	Nm
103	Bolt	171.4	19.6
104	Nut	171.4	19.6
107	Plug	171.4	19.6
112	Bolt	171.4	19.6

### REPAIR & MAINTENANCE KIT AVAILABLE

<sup>1</sup> Control Unit Parts Kit No. 9910-KIT1757 consists of one each of: Ref. 83 Relief Valve Poppet Retainer, Ref. 84 Gasket Seal O-Ring, Ref. 85 Tension Spring Guide, Ref. 109 Spring Holder, Ref. 113 Tension Spring and Ref. 114 Relief Valve Seat.