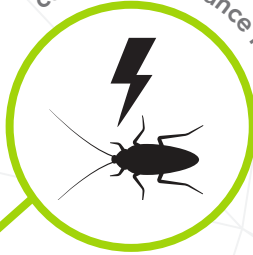


combats resistance issues



approved for use in food handling areas



ideal tank mix partner



approved for indoor and outdoor use



GET MORE FROM YOUR TREATMENTS WITH PBO-8® SYNERGIST

Add the power and performance of PBO-8® Synergist to your arsenal of pest control solutions to maximize the efficiency of your treatment protocols. Further, its approved use in a variety of sites, including food handling areas, PBO-8® Synergist provides peace of mind that the job will get done right every time.

See how PBO-8® Synergist can help maximize your treatments at Zoecon.com

A Network of Complete Control



PBO-8[®]

Synergist

TREATMENT OPTIONS

Compatible with insecticides that are designed for:

- Crack-and-crevice treatments
- Space spray
- Surface spray
- Broadcast treatments

ACTIVE INGREDIENT

- Piperonyl Butoxide 91.3%

ABOUT THE ACTIVE INGREDIENT

PBO-8[®] Synergist features the active ingredient Piperonyl Butoxide, a synergist that enhances the potency of pyrethrins and other pesticides.

FEATURES

- Approved for use in food handling and food processing areas
- Labeled for use as an on-animal spray or in livestock areas
- Appropriate for indoor and outdoor treatments
- Approved for treatments at residential and commercial sites

BENEFITS

- Aids in maximizing the knockdown capabilities of insecticide tank mix partners
- Flexible label allows for applications in a variety of sites
- Formulated to assist with resistance management

AVAILABLE SIZES

- 1 pt. bottle 8 per case
- 1 qt. bottle 10 per case
- 1 gal. bottle 4 per case
- EPA Reg. #89459-33

APPLICATION RATES

- See product label for complete dilution and application rate instructions.
Follow all label directions

THIS PRODUCT IS A SYNERGIST DESIGNED TO BE MIXED WITH AN INSECTICIDE FOR CONTROL OF A VARIETY OF INSECT PESTS.

APPLICATION SITES

- Residential Dwellings
- Commercial Buildings
- Institutional Buildings
- Food Processing Areas
- Food Handling Areas
- Turf
- Ornamentals
- Crops
- Greenhouses
- Nurseries
- On Livestock Animals
- In and Around Livestock Housing