



AIROFOG MACHINERY CO., LTD.

Tel: +86-21-5190.5296~5190.5299
www.airofog.com, airofog@airofog.com

AIROFOG GERMANY
Tel: +49-6446-889-481
info@airofog.de



AIROFOG USA

Tel: +1-352-593-5152
airofog@airofogusa.com



USL



USP



USA

Unique - Spray Instruction Manual

**model: USL
USP
USA**



Airofog 1L / 34 oz Unique-Spray USL, USP, USA referred to in this document are designed for use by qualified and experienced personnel. Please read this instruction thoroughly before usage.

Safety Instruction

- Keep out of reach of children.
- Before usage, check condition and proper function of the sprayer.
- Only pumping up and using sprayer in upright or vertically hanging position.
- Do not leave sprayer filled with pesticide in the sun.
- Note the wind direction, do not spray against wind and prevent droplets from drifting onto areas which must not be treated.
- Never spray into electric outlets or cable boxes.
- When using the metal extension close to electric outlets, pay attention to avoid the shock hazard.
- Do not spray to person or pet.
- Do not operate the sprayer if there are visible symptoms of a problem.
- Wear personal protective equipment when handling dangerous substances.
- Application of insecticides should follow recommendations of manufacturers and be in compliance with local regulations controlling the application of pesticides. We are not liable for consequence of improper applications.
- When unscrewing, never point the lance at others or yourselves.
- Never blow through clogged nozzles or valves with the mouth.
- Before repair and maintenance, drain the sprayer and release all pressure.
- Always replace damaged or malfunctioning parts immediately.

Cautions:

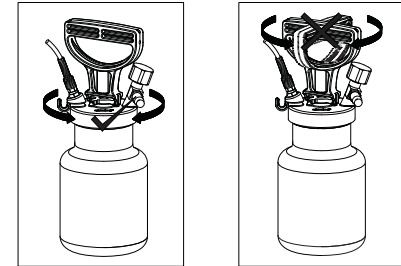
It is the operator's responsibility to ensure the safe use of sprayer and he is fully compliant with national or local regulations governing compression sprayer and application of pesticide.

AIROFOG is not liable for damages or consequences occurred due to improper use/repair/maintenance, the use of non-recommended/unoriginal parts, and acceptance of damaged/broken sprayers by any reason.

Operation

A) Opening/Closing bottle and filling insecticides:

- To open the bottle, holding the bottle cap then turning it counter clockwise.
- Follow insecticide's label instruction and fill the well mixed water or oil based insecticide into bottle. Avoid powder or any particle in the insecticide to prevent nozzle clogged.
- To close the bottle, holding and turning the bottle cap clockwise till tightening. **Never open or close the bottle by turning the handle as this may damage the handle seriously.**



B) Pressurizing the sprayer:

- pressing down then ¼ turning the pump handle to unlock the pump handle
- pump plunger up and down until the required pressure is reached
- lock the pump handle

C) Application rates of multi-nozzle (measured with water, at 2.8 bar, 40 psi):

fine fan -----	360ml/min., 12.2 oz/min., 80 °
coarse fan -----	760ml/min., 25.8 oz/min., 80 °
pin stream -----	330ml/min., 11.2 oz/min., 8m
crack & crevice extension straw -----	50ml/min., 1.7 oz/min.

Application rates of aerosol nozzle (measured with water, at 4 bar, 60 psi):

fine, white -----	60ml/min., 2 oz/min.
medium, blue-----	90ml/min., 3 oz/min.
coase, red -----	130ml/min., 4.4 oz/min.
crack & crevice tip -----	115ml/min., 3.9 oz/min.

Repair and Spare Part

- do not modify the sprayer, this may cause a risk of harm and may damage the sprayer
- if any part shows signs of damage or wear, replace it immediately
- always use original spare parts for repair or maintenance

Care and Maintenance

A) After using:

- empty the bottle and drain the hose and lance after each use
- carefully inspect all gaskets and hoses as well as all other fittings of wear and tear, replace when necessary.

B) Cleaning the sprayer

- rinse the bottle thoroughly with water
- add water and detergent into the bottle
- attach pump cap and tighten it
- shake to clean the bottle
- pressurize the bottle
- flush the hose and nozzle
- empty the bottle and refill with clean water
- flush the hose and trigger valve once more
- empty the remaining water
- the sprayer should be cleaned thoroughly at least once a week

C) Cleaning clogged nozzle and crack & crevice tip

- do not insert metal objects into the tip orifices
- clean with a soft bristle brush such as a tooth-brush to free clogs
- cleaning detergents or solvents can be used to soak the tip (do not use ammonia – it can corrode brass)
- do not insert metal object into the tip which will be greatly damaged to the point of not functioning at all
- run warm water over and into the crack & crevice tip
- soak the nozzle and extension straw in warm, soapy water
- blow compressed air through back of nozzle and crack & crevice tip

D) Maintenance of pump and trigger valve

- piston o-ring (8) should be oiled from time to time
- check valve at the bottom of the pump cylinder prevents liquid from entering the pump, if liquid leaks into the pump, the valve should be inspected or replaced
- if liquid leaks out of the trigger valve or any connection, the valve seal/gasket or the connection should be inspected or replaced

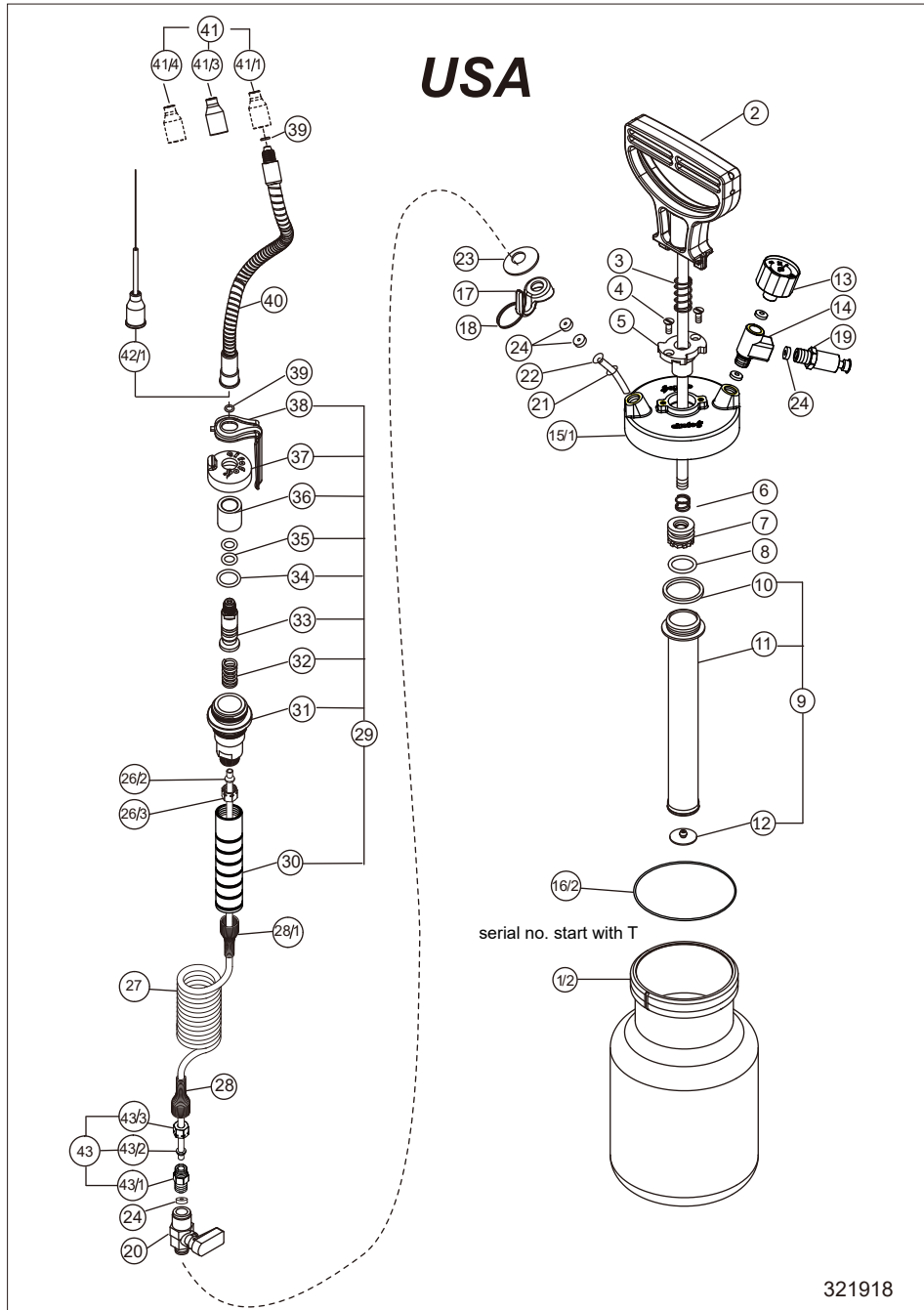
Specification

	US Lance (USL)	US Plus (USP)	US Aerosol (USA)
Tank	stainless steel AISI 304, 1.33 litre / 45.2 oz		
Working Capacity	1 litre / 34 oz		
Max. Working Pressure	8 bar / 120 psi		
Cap	high quality brass		
Pump Cylinder	stainless steel AISI 304, with Viton™ check-valve		
Spray Hose	heavy duty coiled		
Pressure Release Valve	supplied as standard		
Pressure Gauge	0-10 bar / 0-150 psi		
Discharge Valve	brass, drip-free trigger valve 9" lance with multi-nozzle and C&C straw	brass, drip-free trigger valve with multi-nozzle and C&C straw	brass, wand-like trigger with Flexi-pro aerosol delivery system (FADS)
Net Weight	1.6 kg / 3.52 pound	1.49 kg / 3.3 pound	1.22 kg / 2.86 pound
Total Height	29.5 cm / 11.6 inch		

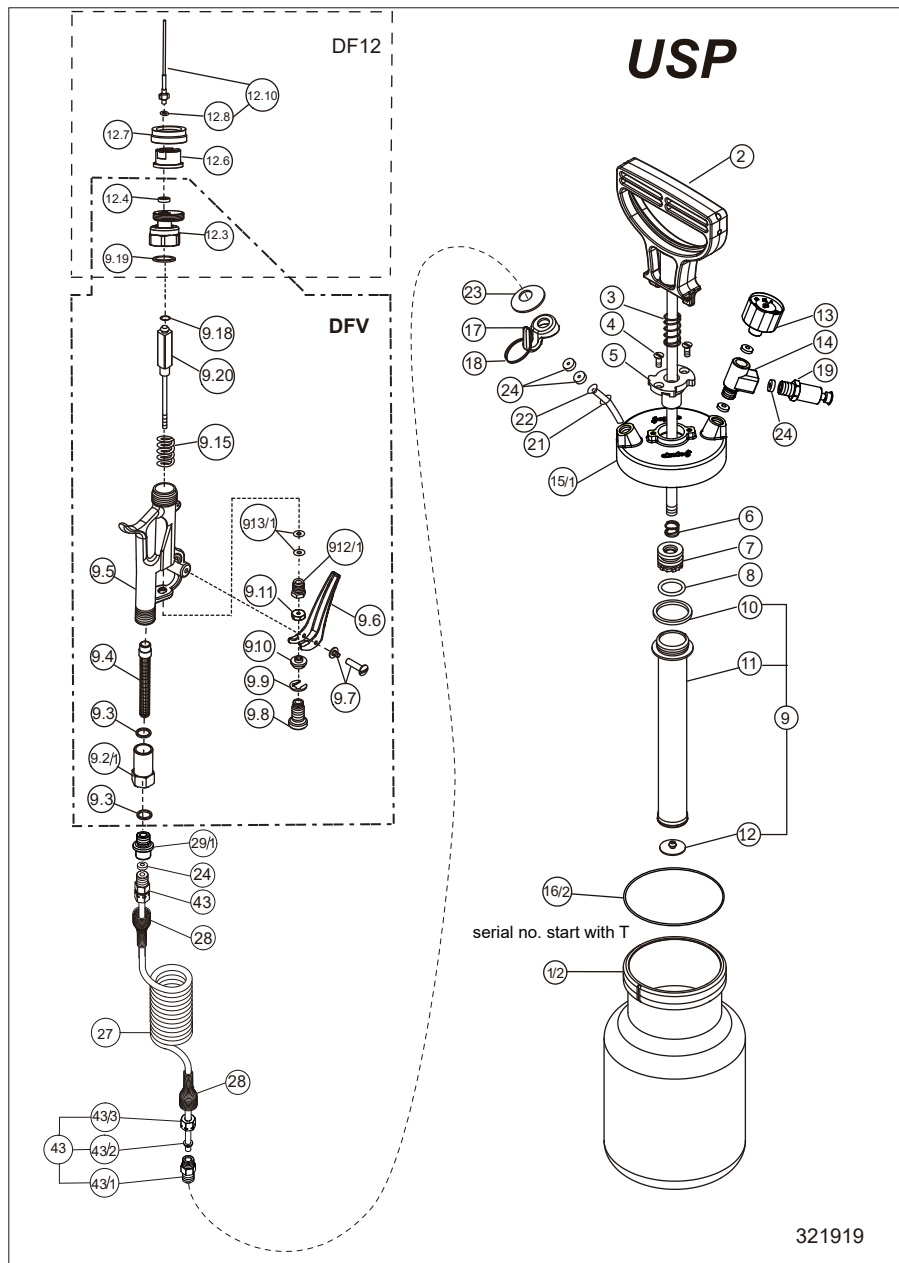
※ Specifications are subject to change without notice or obligation.

Trademarks appearing within are the property of Airofog Machinery Co., Ltd. or Airofog Germany.

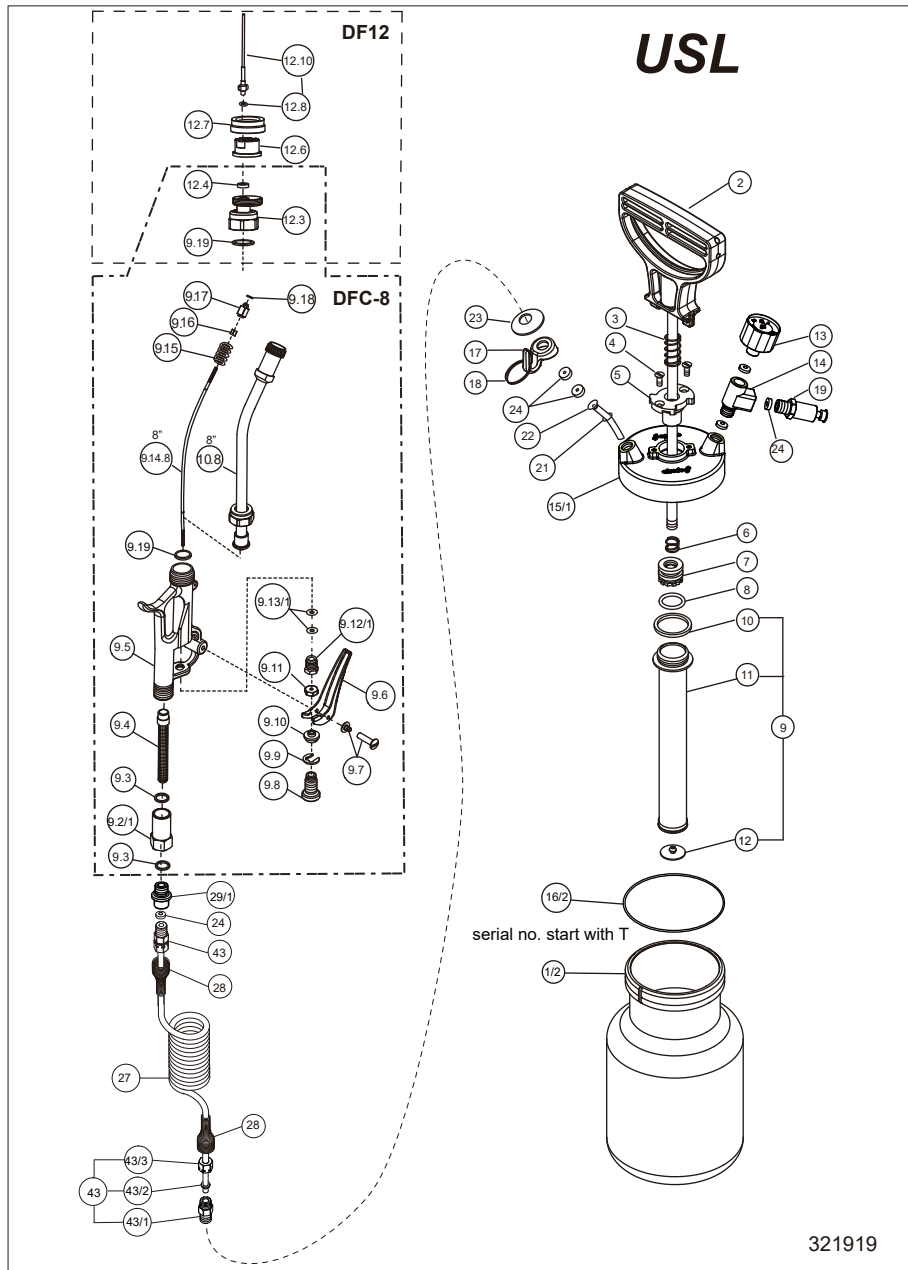
Other trademarks are the property of their respective owners.



USA Spare Part List							
Pos.	Part No.	Description	Pos.	Part No.	Description		
1/2	604-001-110	Bottle	28/1	603-004-040	Hose Holder Spring		
2	604-002-010	Piston Rod, Black	29	601-007-000	Flexi-Valve, Assembly consisting 30-38		
3	604-003-000	Spring					
4	604-004-000	Countersunk Screw					
5	604-005-010	Cylinder Cap, Black	30	601-007-010	Valve Handle		
6	505-001-020	Spring	31	601-007-020	Valve Body		
7	604-007-000	Piston	32	505-003-014	Spring		
8	604-008-000	O-Ring	33	601-007-040	Seat		
9	604-009-000	Pump Cylinder, Assembly	34	601-007-060	O-Ring, Viton		
10	935-027-010	O-Ring	35	935-041-000	O-Ring, Viton		
11	604-011-000	Cylinder Tube	36	601-007-070	Seat Sleeve		
12	604-012-000	Check Valve	37	601-007-080	Valve Cup		
13	604-013-000	Pressure Gauge	38	601-007-090	Trigger		
14	510-003-030	T-Connector	39	601-007-100	O-Ring, Viton		
15/1	604-015-010	Bottle Cap	40	601-008-010	Extension , Spiral Wand		
16/2	604-016-110	O-Ring					
17	604-017-010	Hook, Black	41	601-009-000	Aerosol Nozzle Set consisting 41/1,41/3,41/4		
18	601-018-000	Hook Ring					
19	604-019-000	Pressure Release, Valve					
20	601-003-000	Ball Valve	41/1	601-009-030	Aerosol Nozzle, White (optional)		
21	604-019-006	O-Ring	41/3	601-009-050	Aerosol Nozzle, Blue		
22	604-022-010	Supply Tube S.S.	41/4	601-009-070	Aerosol Nozzle, Red (optional)		
23	604-023-000	Disc	42/1	604-010-012	Extension, Crack-Crevise, 12cm		
24	505-002-020	Gasket	43	601-004-100	Swivel Hose Adapter, Assembly		
26/2	601-004-012	Cutting Ring	43/1	601-004-105	Swivel Hose Adapter		
26/3	601-004-013	Retaining Nut					
27	601-004-130	Coiled Hose, Blue	43/2	601-004-103	Cutting Ring		
28	601-004-040	Hose Holder Spring					
			USA	601-023-200	Flexi-Valve Service Kit (34,35x2,39x3)		
						604-035-020	Pump Service Kit, incl. 8, 10, 12, 16/2, 21, 24*5



USP Spare Part List					
Pos.	Part No.	Description	Pos.	Part No.	Description
1/2	604-001-110	Bottle	DFV	501-009-000	DF Valve, Assembly
2	604-002-010	Piston Rod, Black	DF9.2/1	501-009-020	Housing Strainer
3	604-003-000	Spring	DF9.3	500-009-030	Gasket x 2
4	604-004-000	Countersunk Screw	DF9.4	500-009-040	Strainer
5	604-005-010	Cylinder Cap, Black	DF9.5	500-009-050	Valve Body
6	505-001-020	Spring	DF9.6	500-009-060	Trigger
7	604-007-000	Piston	DF9.7	500-009-070	Trigger Screw
8	604-008-000	O-Ring	DF9.8	500-009-080	Safety Lock Nut
9	604-009-000	Pump Cylinder, Assembly	DF9.9	500-009-090	Snap Ring
10	935-027-010	O-Ring	DF9.10	500-009-100	Adjusting Screw
11	604-011-000	Cylinder Tube	DF9.11	500-009-110	Lock Nut
12	604-012-000	Check Valve	DF9.12/1	500-009-121	Sealing Nut
13	604-013-000	Pressure Gauge	DF9.13/1	500-009-131	O-Ring x2
14	510-003-030	T-Connector	DF9.15	500-009-150	Seat Spring
15/1	604-015-010	Bottle Cap	DF9.18	500-009-180	O-Ring, Viton
16/2	604-016-110	O-Ring	DF9.19	505-009-150	Gasket
17	604-017-010	Hook, Black	DF9.20	500-009-200	Long Seat Stem
18	601-018-000	Hook Ring	DF12	500-012-000	Multi-Nozzle, Assembly
19	604-019-000	Pressure Release Valve	DF9.19	505-009-150	Gasket
21	604-019-006	O-Ring	DF12.3	500-012-030	Multi-Nozzle Holder
22	604-022-010	Supply Tube S.S.	DF12.4	500-012-040	Gasket
23	604-023-000	Disc	DF12.6	500-012-060	Multi-Nozzle
24	505-002-020	Gasket	DF12.7	500-012-070	Retainer
27	601-004-130	Coiled Hose, Blue	DF12.8	935-018-000	O-Ring
28	601-004-040	Hose Holder Spring	DF12.10	500-012-110	Straw with O-Ring
29/1	604-029-010	Female Adapter	USP	501-016-030	DF Service Kit, incl. DF (9.1, 9.3*2, 9.13/1*2 9.18, 9.19*2, 12.4, 12.8)
43	601-004-100	Swivel Hose Adapter, Assembly			
43/1	601-004-105	Swivel Hose Adapter			
43/2	601-004-103	Cutting Ring		604-035-020	Pump Service Kit, incl. 8, 10, 12, 16/2, 21, 24*5
43/3	601-004-104	Retaining Nut			



USL Spare Part List					
Pos.	Part No.	Description	Pos.	Part No.	Description
1/2	604-001-110	Bottle	DF9.3	500-009-030	Gasket
2	604-002-010	Piston Rod, Black	DF9.4	500-009-040	Strainer
3	604-003-000	Spring	DF9.5	500-009-050	Valve Body
4	604-004-000	Countersunk Screw	DF9.6	500-009-060	Trigger
5	604-005-010	Cylinder Cap, Black	DF9.7	500-009-070	Trigger Screw
6	505-001-020	Spring	DF9.8	500-009-080	Safety Lock Nut
7	604-007-000	Piston	DF9.9	500-009-090	Snap Ring
8	604-008-000	O-Ring	DF9.10	500-009-100	Adjusting Screw
9	604-009-000	Pump Cylinder, Assembly	DF9.11	500-009-110	Lock Nut
10	935-027-010	O-Ring	DF9.12/1	500-009-121	Sealing Nut
11	604-011-000	Cylinder Tube	DF9.13/1	500-009-131	O-Ring x2
12	604-012-000	Check Valve	DF9.14.8	500-009-141	Valve Cable 8"
13	604-013-000	Pressure Gauge	DF9.15	500-009-150	Seat Spring
14	510-003-030	T-Connector	DF9.16	500-009-160	Seat Stem nut
15/1	604-015-010	Bottle Cap	DF9.17	500-009-170	Seat Stem
16/2	604-016-110	O-Ring	DF9.18	500-009-180	O-Ring, Viton
17	604-017-010	Hook, Black	DF9.19	505-009-150	Gasket
18	601-018-000	Hook Ring	DF10.8	500-010-080	Lance 8"
19	604-019-000	Pressure Release Valve	DF12	500-012-000	Multi-Nozzle, Assembly
21	604-019-006	O-Ring	DF9.19	505-009-150	Gasket
22	604-022-010	Supply Tube S.S.	DF12.3	500-012-030	Multi-Nozzle Holder
23	604-023-000	Disc	DF12.4	500-012-040	Gasket
24	505-002-020	Gasket	DF12.6	500-012-060	Multi-Nozzle
27	601-004-130	Coiled Hose, Blue	DF12.7	500-012-070	Retainer
28	601-004-040	Hose Holder Spring	DF12.8	935-018-000	O-Ring
29/1	604-029-010	Female Adapter	DF12.10	500-012-110	Straw with O-Ring
43	601-004-100	Swivel Hose Adapter, Assembly	USL	501-016-030	DF Service Kit, incl.
43/1	601-004-105	Swivel Hose Adapter			DF (9.1, 9.3*2, 9.13/1*2
43/2	601-004-103	Cutting Ring			9.18, 9.19*2, 12.4, 12.8)
43/3	601-004-104	Retaining Nut			604-035-020
DFC-8	501-000-081	DFC-8" Valve Assembly			Pump Service Kit, incl.
DF9.2/1	501-009-020	Housing Strainer			8, 10, 12, 16/2, 21, 24*5