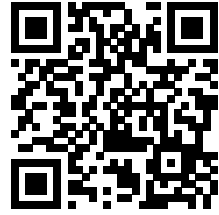




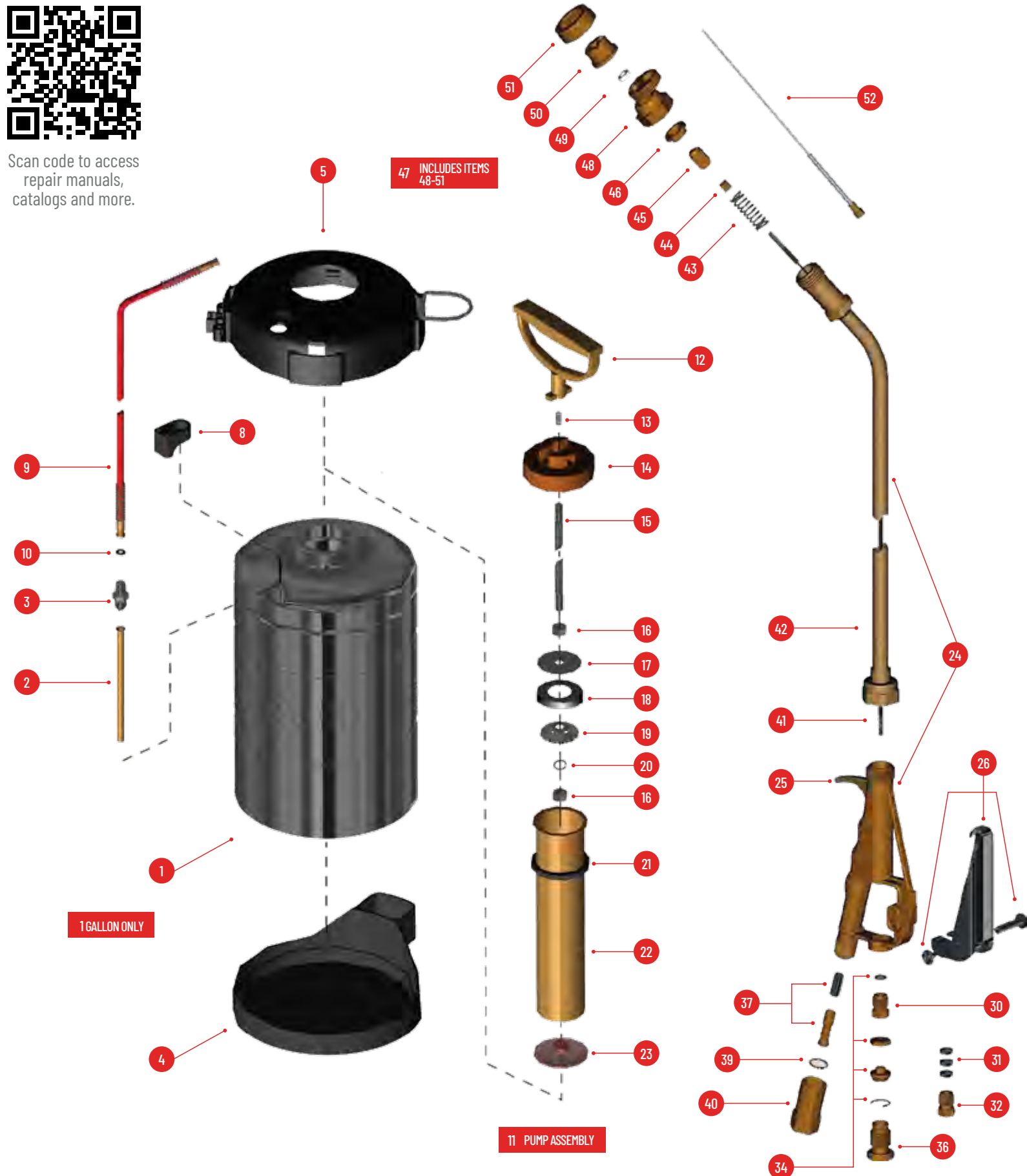
SPRAYER PARTS

Find B&G Sprayer Parts to upgrade or rebuild your equipment. Our tanks and sprayers are expertly engineered for maximum compatibility and easy repairs.

a Pelsis Group Brand pelsis



Scan code to access repair manuals, catalogs and more.



ITEM #	PART #	ORDER #	DESCRIPTION
1	T-50	22024800	Tank (.5 Gallon)
	T-100	22025000	Tank (1 Gallon)
	T-200	22025100	Tank (2 Gallon)
	T-300	22025200	Tank (3 Gallon)
	T-500	22025250	Tank (5 Liter)
2	HS-297	22025600	Tube, Siphon (.5 Gallon)
	OS-297	22025700	Tube, Siphon (1 Gallon)
	TS-297	22025800	Tube, Siphon (2 Gallon)
	THS-297-01	22025901	Tube, Siphon (3 Gallon)
	FS-297	22025950	Tube, Siphon (5 Liter)
3	HA-298	22025300	Adapter, Hose
4	TB-1	22049477	Bottom, Tank (1 Gallon Only)
5	TT-1	22049476	Top, Tank (1 Gallon Only)
8	5700-H	22049475	Holder, Tip (Not used with Item 5)
9	D-50	22030100	Hose, 4 ft., red
10	D-51-P	22030400	Washer, Hose
11	PH-265	22026900	Pump Assembly (.5 Gallon)
	PO-265	22027000	Pump Assembly (1 Gallon)
	PF-265	22027125	Pump Assembly (2 Gallon and 5 Liter)
	PT-265	22027100	Pump Assembly (3 Gallon)
	12	P-275	22029800
13	P-276	22029900	Spring, Pump Lock
14	P-2 74	22029700	Cap, Pump
15	PH-273	22029400	Rod, Plunger (.5 Gallon)
	PO-273	22029500	Rod, Plunger (1 Gallon)
	PF-273	22029650	Rod, Plunger (2 Gallon and 5 Liter)
	PT-273	22029600	Rod, Plunger (3 Gallon)
	16	P-269-SS	22028250
17	P-272	22029200	Plate, Back
18	NP-277	22029000	Cup, Polypropylene
	NP-271	22028800	Cup, Leather
19	NP-270	22028600	Plate, Cup Spreader
20	P-269A	22028400	Washer, Lock
21	P-268	22028000	Gasket, Pump
22	PH-267	22027400	Tube, Pump (.5 Gallon)
	PO-267	22027500	Tube, Pump (1 Gallon)
	PF-267	22027650	Tube, Pump (2 Gallon and 5 Liter)
22	PT-267	22027600	Tube, Pump (3 Gallon)
23	PV-266	22027200	Valve, Check
24	120	22042101	Valve, Extenda-Ban 9" (less tip)
	220	22042203	Valve, Extenda-Ban 18" (less tip)
420	22042778	Valve, Extenda-Ban 24" (less tip)	

ITEM #	PART #	ORDER #	DESCRIPTION
25	VB-147	22044450	Valve Body Kit
26	VT-140	22042800	Trigger, Valve Housing, Screw
28	-	22025150	Stainless siphon tube, pump cylinder
30	PN-150-2	22042455	Nut, Packing
30A	PN-150-1	22042454	(1999 - 2000) Nut, Packing
31	VP-151	22045099	Packing, Valve
32	PN-150	22044900	Nut, Packing (Prior to 1999)
34	AS-148	22044500	Adjusting Screw, Lock nut, Snap ring
36	SL-162	22046700	Nut, Safety Lock
37	MS-145-50	22043800	Strainer, 50 Mesh Support, Strainer
39	NG-146	22044200	Gasket, Nylon
40	SA-143	22043400	Housing, Strainer
	VC-152	22045300	Cable, Valve 9"
	VC-153	22045400	Cable, Valve 18"
42	VC-163	22045450	Cable, Valve 24"
	VE-154	22045500	Extension, Brass 9"
42	VE-155	22045600	Extension, Brass 18"
	VE-164	22045650	Extension, Brass 24"
42	VE-154-SS	22045510	Extension, Stainless Steel 9"
	VE-155-SS	22045610	Extension, Stainless Steel 18"
42	VE-164-SS	22045710	Extension, Stainless Steel 24"
43	VS-156	22045700	Spring, Seat Stem
44	SSL-157	22045900	Nut, Seat Stem
45	SS-158	22046100	Stem, Seat
46	SP-159	22046300	Gasket, Soft Seat
47	5850-CC	22049466	B&G 4 Way C&C Tip Assembly (Parts 48-51)
	5850	22049451	Tip Assembly (No C+C)
48	9751-M	22049300	Holder, B&G 4 Way C+C Tip
49	4190	22034700	Gasket, Viton®
50	5800-CC	22049467	Tip, B&G 4 Way C+C
	5800	22049452	Tip only (No C+C)
51	4596	22034500	Retainer, Tip
	52	5700-B	22049200
53		22042300	Complete 9" valve with Tip
		22042350	Complete 9" valve with C+C Tip
54		22042400	Complete 18" valve with Tip
		22042450	Complete 18" valve with C+C Tip
55		22042700	Complete 24" valve with Tip
		22042750	Complete 24" valve with C+C Tip