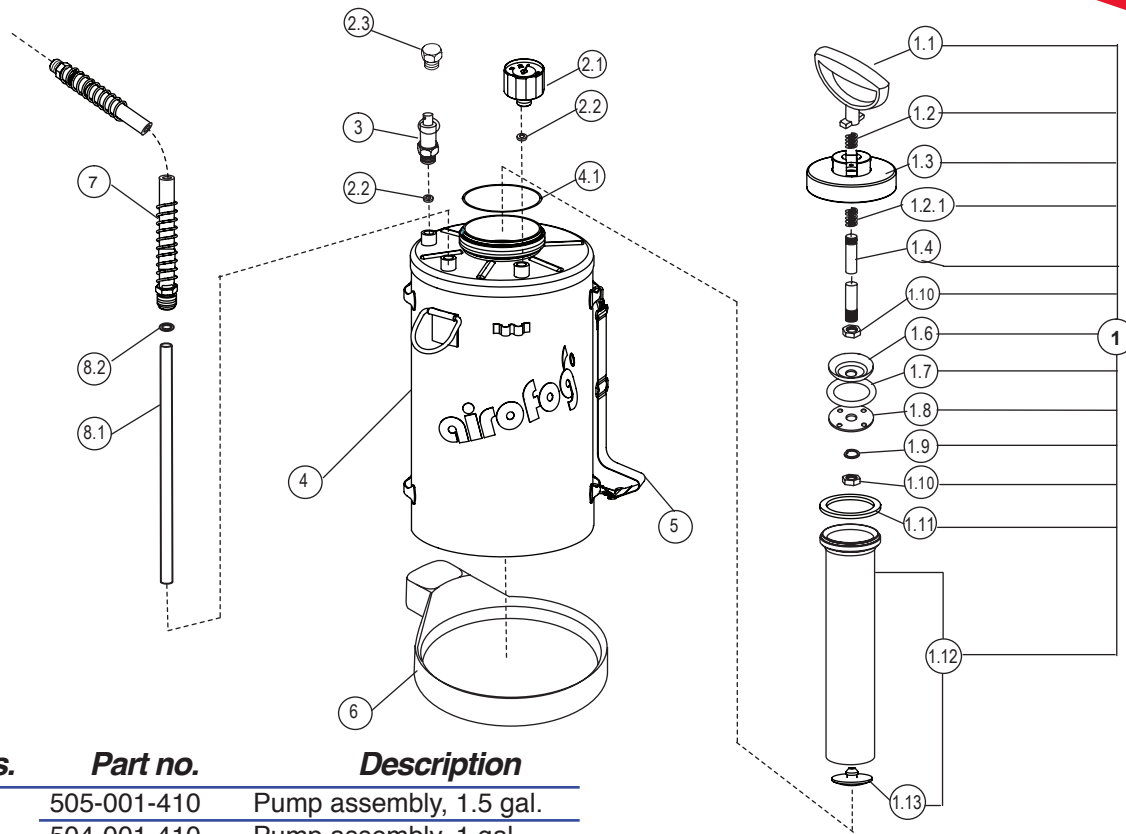


Airofog Sprayer Tank Diagram



Pos.	Part no.	Description
1	505-001-410	Pump assembly, 1.5 gal.
	504-001-410	Pump assembly, 1 gal.
	502-001-410	Pump assembly, .5 gal.
1.1	501-001-010	Pump handle
1.2	505-001-020	Pump lock spring
1.2.1	505-001-021	Spring
1.3	501-001-030	Pump cap
1.4	505-001-440	Pump rod, 1.5 gal.
	504-001-440	Pump rod, 1 gal.
	502-001-440	Pump rod, .5 gal.
1.6	505-001-060	Cup spreader plate
1.7	505-001-070	O-ring
1.8	505-001-080	Back plate
1.9	505-001-090	Lock washer
1.10	501-001-100	Plunger nut
1.11	501-001-110	Pump gasket
1.12	505-001-420	Pump cylinder, 1.5 gal.
	504-001-420	Pump cylinder, 1 gal.
	502-001-420	Pump cylinder, .5 gal.

Pos.	Part no.	Description
1.13	502-001-130	Check valve
2.1	501-002-000	Psi gauge (0-60psi)
2.2	505-002-020	Washer
3	501-003-000	Pressure relief Valve
4	505-004-410	Tank, 1.5 gal.
	504-004-410	Tank, 1 gal.
	502-004-410	Tank, .5 gal
4.1	604-016-010	O-ring
5	505-005-000	Adjustable carry strap
6	505-006-010	Base, blue
7	501-007-620	4ft hose, Blue
	501-007-420	4ft hose, Green
8	505-005-400	Syphon tube, 1.5 gal.
	504-008-400	Syphon tube, 1 gal.
	502-008-400	Syphon tube, .5 gal.



Airofog USA
15074 Aviation Loop Drive
Brooksville, FL 34604
USA

+1-352-593-5152
airofog@airofogusa.com
www.airofogusa.com