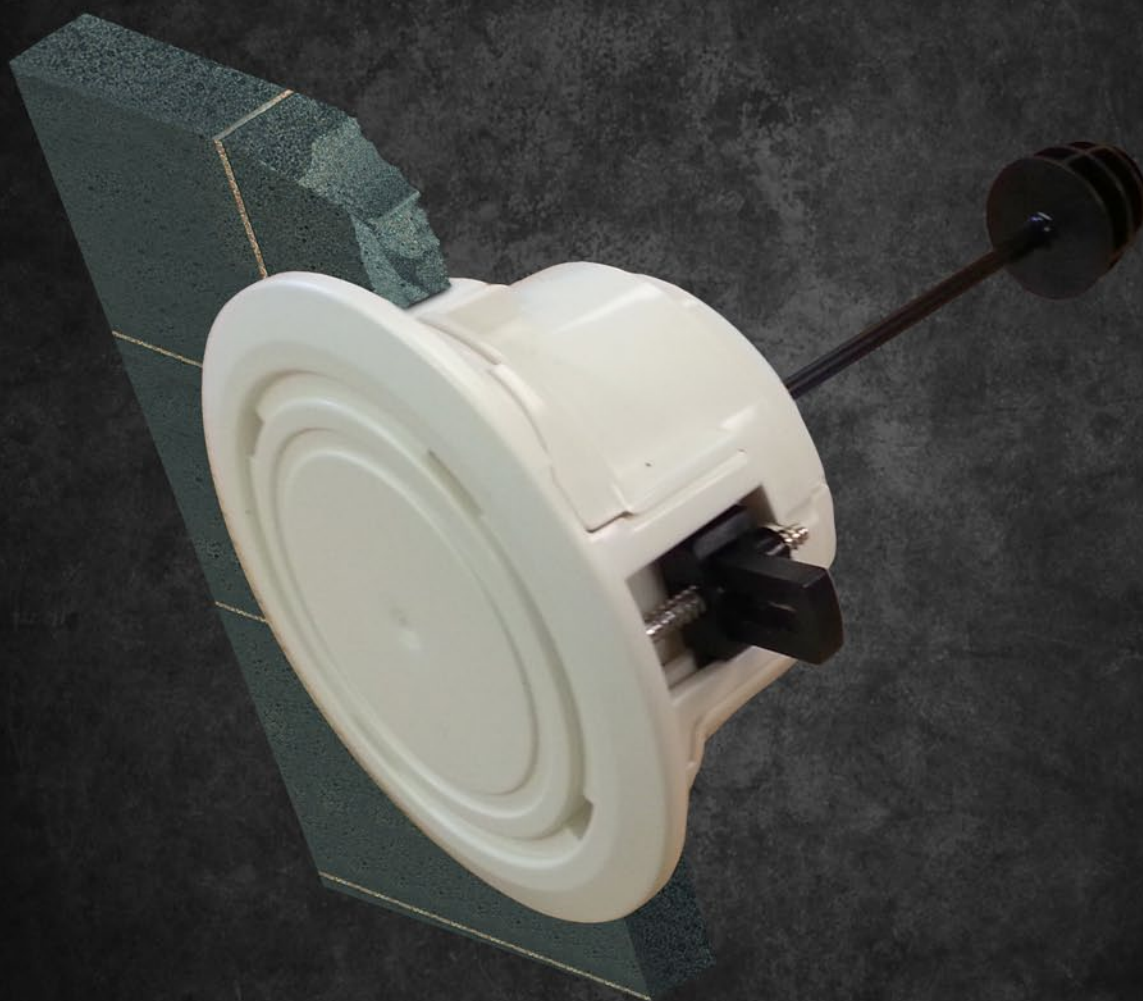


The next generation bait station...





The most revolutionary change to bait station design in 20 years...

What is Baitsafe™?

- Baitsafe™ is a revolutionary new product to compliment or replace conventional methods of surface baiting
- Baitsafe™ allows instant access to 'their world' where pests live and breed.
- Baitsafe™ provides a clean and safer solution.
- It can be installed into ceilings, walls, flat roofed areas, eaves, between floors and more.
- Suitable for insect baiting and deodouring as well as rodent baiting and monitoring.

Secure Locking system

Baitsafe's™ patented locking system protects the general public and the non target species against accidental exposure to rodenticides.

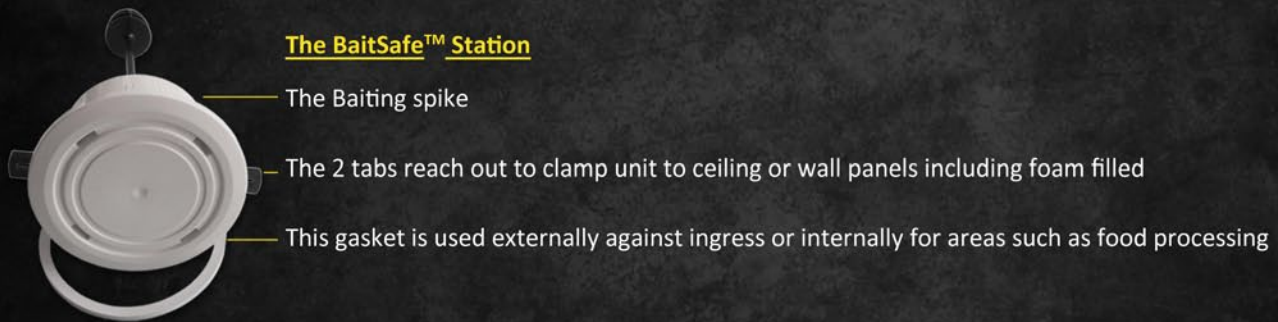
Safety

- No ladder needed to check and change baits
- Instant and safe access to bait to monitor activity
- Fully isolated access from children and pets
- HACCP food safety accredited
- Winner of the Food Magazine Award for "Food Safety & Innovation in Non-Food"

Can be used in...

Homes, apartments, businesses, factories, schools, retail outlets and more...

The BaitSafe™ Station



The Access Key

The Access key is required to service and replace the baits behind the station.

A standard extension/paint pole screws in to the unit to allow further reach



The underside of the base unit is designed to catch 'spoils' from the bait and other contaminants.

BaitSafe™ does not discriminate between baiting methods and can hold, bait blocks, paste or pellets, in some cases even liquids.

Available Accessories

90mm Holesaw



Saw Arbour 7/16"



Extension pole



Installation

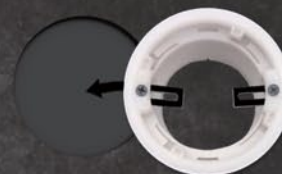
1. Cut a 90mm diameter hole
Before cutting hole, check that there are no ceiling supports or services above your selected installation area.
If installing in the walls some baits include an attractant which may arouse curiosity in pets.
Please check manufacturer's labelling.



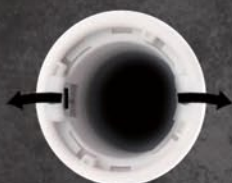
2. Loosen the screws and pull the tabs inwards



3. Place the BaitSafe™ station into the hole



4. Push the tabs outwards to fix the station into place



5. Fasten the tabs to secure the unit into place.
Do not over tighten screws



Access

Tighten the 'Key' onto the head of the paint pole. Check the key is tight before each use.



Insert 'Key' prongs into the slots of the fascia plate, pushing up gently, against the surface.
Turn anti-clockwise to unlock. Lower the unit carefully from the ceiling.

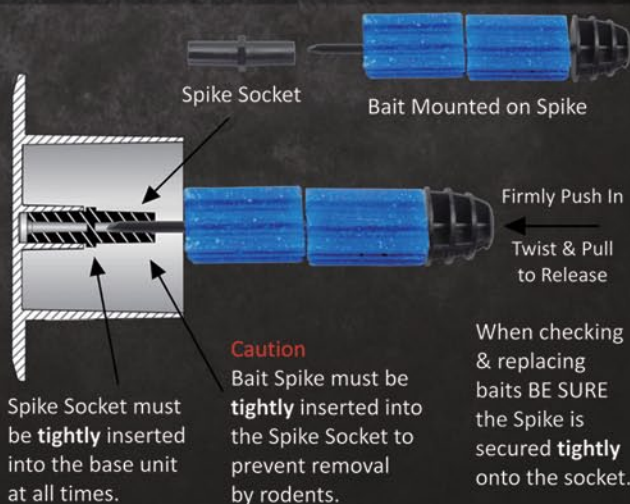


To replace the unit, insert the 'Key' into the fascia plate and raise it up to the ceiling. Gently insert and turn clockwise to lock.



Installing Bait

When installing in the wall cut the stem length down to suit the available wall depth.
For exterior (or fibre cement) use the rubber seal.



When checking & replacing baits BE SURE the Spike is secured **tightly** onto the socket.