

# Aqua Zenivex™ E20

*A reduced-risk, water-dilutable option for effective mosquito control.*



## KEY ADVANTAGES OF AQUA ZENIVEX™ E20 ADULTICIDE:

- Water-dilutable formulation
- EPA reduced-risk classification
- Approval for wide range of application sites including agricultural crops, pastures and rangeland
- Requires no synergist (PBO)
- Mixed/agitated solution stays without settling or stratifying
- No crop set-backs
- Can be used diluted or undiluted

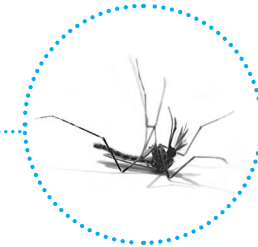


# Aqua Zenivex™ E20



# Zenivex® E20

A new reduced risk H<sub>2</sub>O dilutable alternative



The efficacy and toxicity profile of Zenivex® adulticide, in a water-dilutable formulation

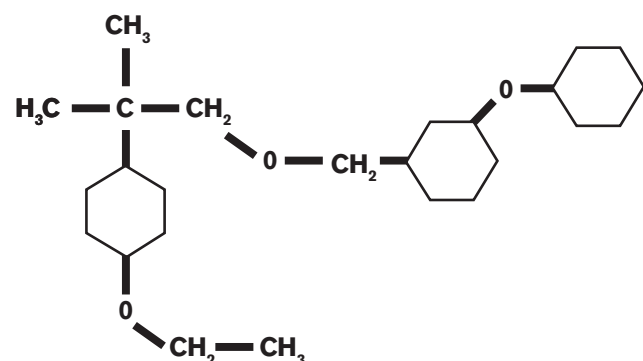
To learn more about Zenivex® adulticide or Aqua Zenivex™ E20, contact Central Life Sciences or visit [CentralMosquitoControl.com](http://CentralMosquitoControl.com)



# Aqua Zenivex™ E20

## ALL ABOUT ETOFENPROX:

The active ingredient in Aqua Zenivex™ E20 is Etofenprox, a unique molecule for the control of adult mosquitoes. The EPA has classified Etofenprox as reduced risk for mosquito control. It poses a low risk to human health and the environment.



## ENVIRONMENTAL PROFILE:

Etofenprox offers a positive environmental profile. The molecule rapidly breaks down in sunlight. Environmental studies show Aqua Zenivex™ E20 is not persistent in soil, surface water or sediment, with average half-lives in aquatic field studies of 1.7 days in water and 4.4 days in soil.

## HOW IT WORKS:

The Etofenprox molecule in Aqua Zenivex™ E20 is a sodium channel blocker, providing rapid knockdown and a broad spectrum of control. Aqua Zenivex™ E20 is an adulticide that works on contact and has a very low toxicity profile for mammals, a low profile for avians and its dried residues are easy on bee populations.

### CHEMICAL NAME:

2-(4-ethoxyphenyl)-2-methylpropyl  
3 phenoxybenzyl ether

### COMMON NAME:

Etofenprox

### CAS NUMBER:

80844-07-1

### EMPIRICAL FORMULA:

C<sub>25</sub> H<sub>28</sub> O<sub>3</sub>

### PHYSICAL STATE (TECHNICAL):

Crystalline solid at room temperature

### FORMULATION PROPERTIES:

Clear liquid, low odor

### MOLECULAR WEIGHT:

376.5

### SPECIFIC GRAVITY (TECHNICAL):

1.157@23°C

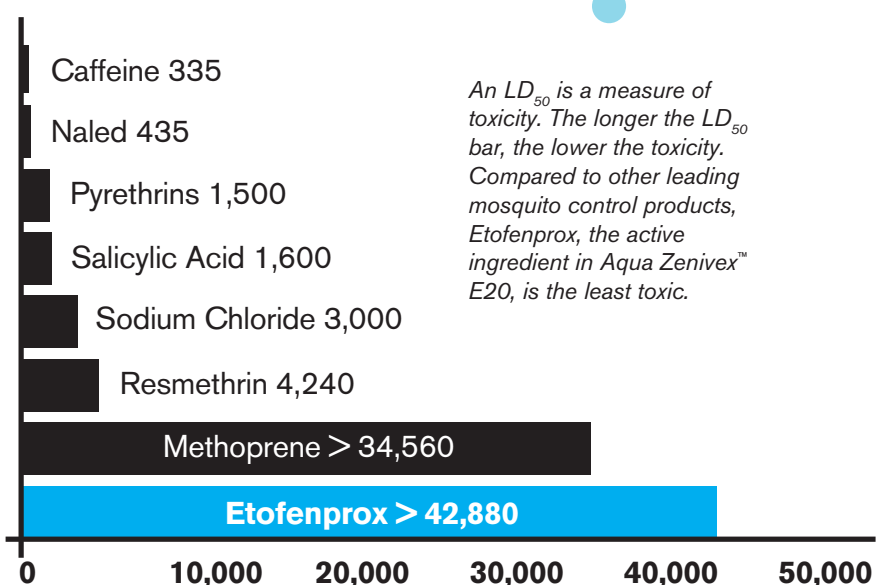
### VAPOR PRESSURE:

32mPA (100°C)

### WATER SOLUBILITY:

<1µ/1 (25°C)

## COMPARATIVE ACUTE TOXICITIES:



## TOXICOLOGICAL PROFILES:

### • Ecological Toxicology

- Etofenprox presents a low toxicity to birds
- Dried foliar residues are not harmful to honeybees

### • Mammalian Toxicology

- Etofenprox has a low toxicity to mammals
- EPA has classified Etofenprox as unlikely to cause cancer in humans
- Etofenprox has low intermediate-term toxicity and chronic toxicity
- Etofenprox is not a mutagen, developmental or reproductive toxin

## TARGETING ALL MOSQUITO SPECIES:

- *Aedes aegypti*
- *Aedes albopictus*
- *Aedes dorsalis*
- *Aedes melanimon*
- *Aedes nigromaculis*
- *Aedes vexans*
- *Anopheles crucians*
- *Anopheles quadrimaculatus*
- *Coquillettidia sp.*
- *C. perturbans*
- *Culex nigripalpus*
- *Culex pipiens*
- *Culex quinquefasciatus*
- *Culex tarsalis*
- *Ochlerotatus sollicitans*
- *Ochlerotatus taeniorhynchus*

## USAGE RATES INFO:

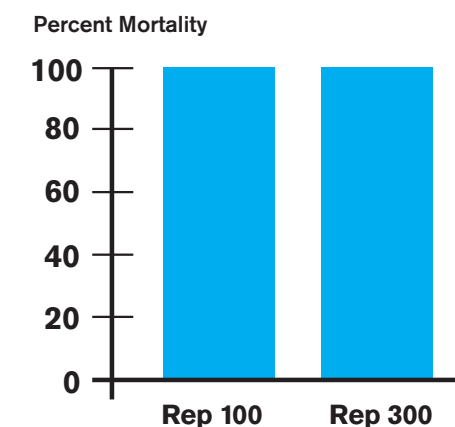
Application rates – 0.00175, 0.0035, and 0.007 lb per acre – vary depending on the preference of the user, allowing for flexibility in a variety of habitats and for a variety of mosquito species. Aqua Zenivex™ E20 applications include aerial, vehicle mounted and hand held equipment. VMD for ground fogging is 7 to 30 microns, and for aerial <60 microns.

Consult your Central Life Sciences field or technical representative for calibration or application assistance.

## AQUA ZENIVEX™ E20 EFFICACY TESTING IN TEXAS VIA TRUCK MOUNTED ULV SPRAYER AND 300 FOOT SPRAY SWATH:

### *Aedes albopictus*

Rate 0.00175 Pounds per Acre



Date(s): June 3 & 4, 2014

Rate Used: 0.00175 lbs/acre

Air Temperature:

(rep 100) 26.8° C

(rep 300) 26.1° C

AVG Wind:

June 3 (rep 100) - 4.1 m/s

June 4 (rep 300) - 5.9 m/s

24-hour Percentage Mortality:

Rep 100 – *Aedes albopictus*: 100%

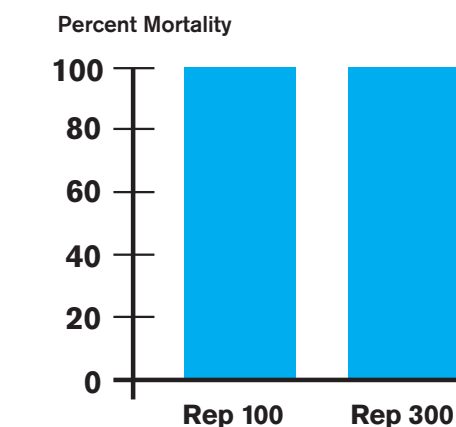
*Culex quinquefasciatus*: 94%

Rep 300 – *Aedes albopictus*: 100%

*Culex quinquefasciatus*: 95%

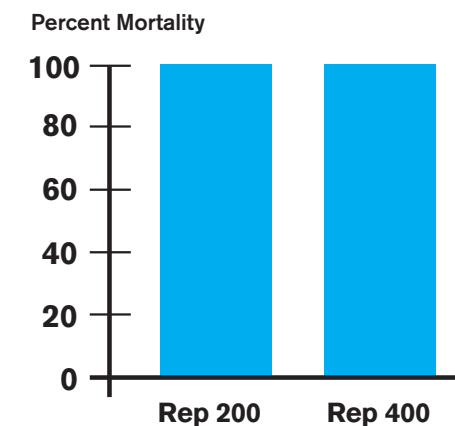
### *Culex quinquefasciatus*

Rate 0.00175 Pounds per Acre



### *Aedes albopictus*

Rate 0.0035 Pounds per Acre



Date(s): June 4, 2014

Rate Used: 0.0035 lbs/acre

Air Temperature:

(rep 200) 26.8° C

(rep 400) 26.0° C

AVG Wind:

(rep 200) 4.1 m/s

(rep 400) 6.2 m/s

24-hour Percentage Mortality:

Rep 200 – *Aedes albopictus*: 100%

*Culex quinquefasciatus*: 96%

Rep 400 – *Aedes albopictus*: 100%

*Culex quinquefasciatus*: 93%

### *Culex quinquefasciatus*

Rate 0.0035 Pounds per Acre

